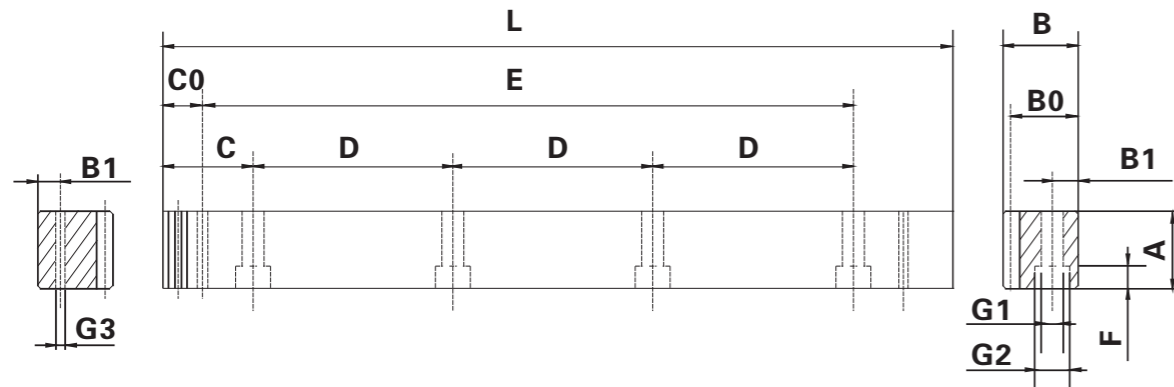


Precision Racks

SSGH-DIN5



單位/Dimension : mm

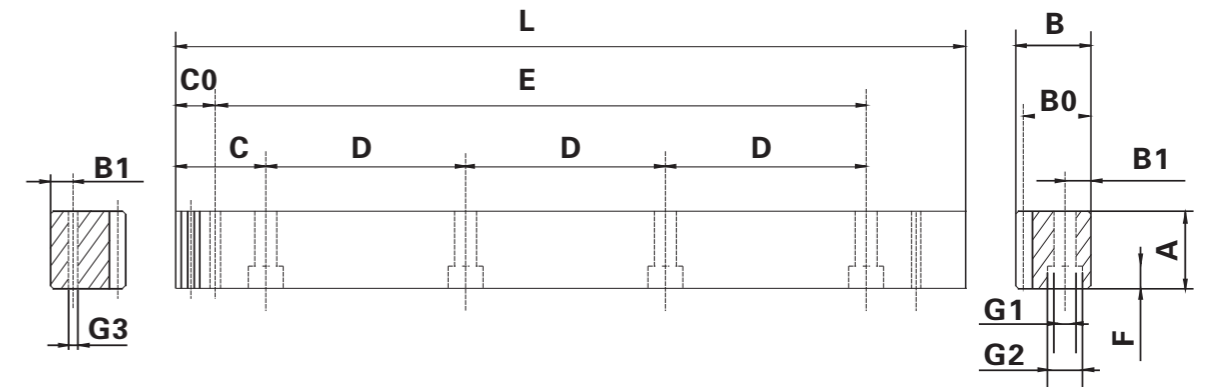
產品型號 Catalog No.	L	齒數 Tooth No.	A	B	B0	C	D	孔數 Hole No.	B1	G1	G2	F	C0	E	G3
SSGH1.50505	499.51	106	17	17	15.5	62.44	124.88	4	8	6	9.5	7	29.0	441.5	5.7
SSGH1.51005	999.03	212	17	17	15.5	62.44	124.88	8	8	6	9.5	7	29.0	941.0	5.7
SSGH020505	502.64	80	24	24	22	62.83	125.66	4	8	7	11	7	31.3	440.1	5.7
SSGH021005	1005.28	160	24	24	22	62.83	125.66	8	8	7	11	7	31.3	942.7	5.7
SSGH030505	508.95	54	29	29	26	63.62	127.23	4	9	10	15	9	34.4	440.1	7.7
SSGH031005	1017.9	108	29	29	26	63.62	127.23	8	9	10	15	9	34.4	949.1	7.7
SSGH040505	502.64	40	39	39	35	62.83	125.66	4	12	10	15	9	37.5	427.7	7.7
SSGH041005	1005.28	80	39	39	35	62.83	125.66	8	12	10	15	9	37.5	930.3	7.7
SSGH050505	502.65	32	49	39	34	62.83	125.66	4	12	14	20	13	30.1	442.4	11.7
SSGH051005	1005.31	64	49	39	34	62.83	125.66	8	12	14	20	13	30.1	945	11.7
SSGH060505	508.95	27	59	49	43	63.62	127.23	4	16	18	26	17	31.4	446.1	15.7
SSGH061005	1017.9	54	59	49	43	63.62	127.23	8	16	18	26	17	31.4	955.0	15.7
SSGH080505	502.64	20	79	79	71	62.83	125.66	4	25	22	33	21	26.6	449.5	19.7
SSGH081005	1005.28	40	79	79	71	62.83	125.66	8	25	22	33	21	26.6	952	19.7

規格 Specifications

精度等級 Precision grade	DIN5h22	齒面硬度 Tooth hardness	50 ~ 55HRC
齒型 Gear teeth	直齒 Straight	表面處理 Surface treatment	研磨 Grinding
壓力角 Pressure angle	20°	齒面處理 Treatment of Tooth	研磨 Grinding
材質 Material	S45C	熱處理 Heat treatment	齒面高周波熱處理 Tooth surface induction hardened

Precision Racks

SSGH-DIN5



單位/Dimension : mm

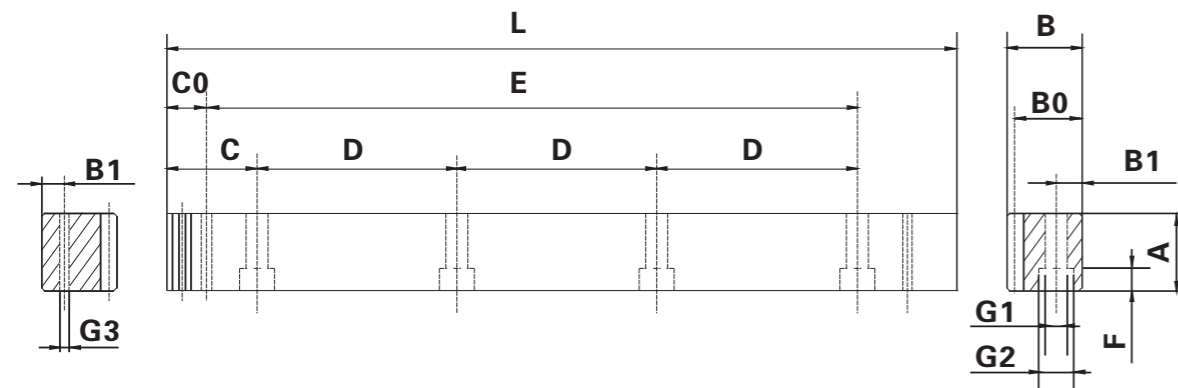
產品型號 Catalog No.	L	齒數 Tooth No.	A	B	B0	C	D	孔數 Hole No.	B1	G1	G2	F	C0	E	G3
SSGH021505	1507.97	240	24	24	22	62.83	125.66	12	8	7	11	7	31.3	942.7	5.7
SSGH022005	2010.62	320	24	24	22	62.83	125.66	16	8	7	11	7	31.3	1948.00	5.7
SSGH031505	1526.82	162	29	29	26	63.62	127.23	12	9	10	15	9	34.4	949.10	7.7
SSGH032005	2035.75	216	29	29	26	63.62	127.23	16	9	10	15	9	34.4	1967.00	7.7
SSGH041505	1507.90	120	39	39	35	62.83	125.66	12	12	10	15	9	37.5	1432.9	7.7
SSGH042005	2010.62	160	39	39	35	62.83	125.66	16	12	10	15	9	37.5	1935.60	7.7

規格 Specifications

精度等級 Precision grade	DIN5h22	齒面硬度 Tooth hardness	50 ~ 55HRC
齒型 Gear teeth	直齒 Straight	表面處理 Surface treatment	研磨 Grinding
壓力角 Pressure angle	20°	齒面處理 Treatment of Tooth	研磨 Grinding
材質 Material	S45C	熱處理 Heat treatment	齒面高周波熱處理 Tooth surface induction hardened

Precision Racks

SSGH-DIN6



單位/Dimension : mm

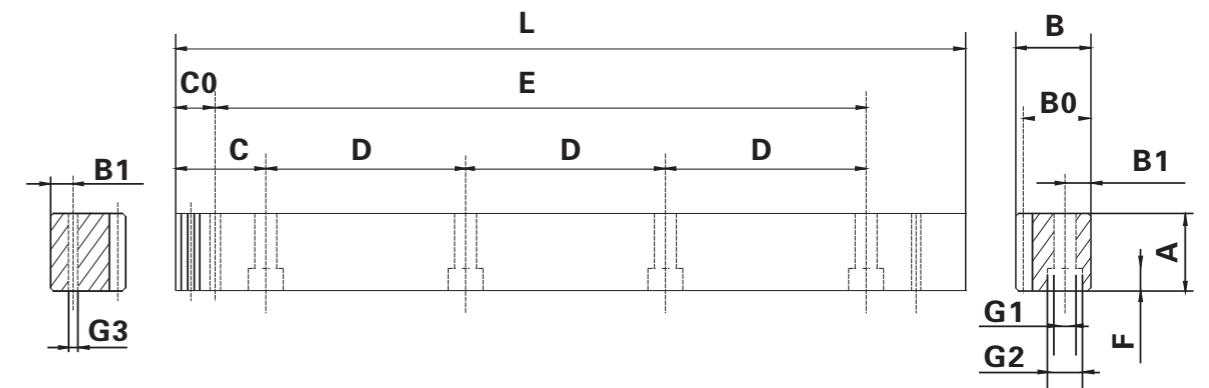
產品型號 Catalog No.	L	齒數 Tooth No.	A	B	B0	C	D	孔數 Hole No.	B1	G1	G2	F	C0	E	G3
SSGH1.50506	499.51	106	17	17	15.5	62.44	124.88	4	8	6	9.5	7	29.0	441.5	5.7
SSGH1.51006	999.03	212	17	17	15.5	62.44	124.88	8	8	6	9.5	7	29.0	941.0	5.7
SSGH020506	502.64	80	24	24	22	62.83	125.66	4	8	7	11	7	31.3	440.1	5.7
SSGH021006	1005.28	160	24	24	22	62.83	125.66	8	8	7	11	7	31.3	942.7	5.7
SSGH030506	508.95	54	29	29	26	63.62	127.23	4	9	10	15	9	34.4	440.1	7.7
SSGH031006	1017.9	108	29	29	26	63.62	127.23	8	9	10	15	9	34.4	949.1	7.7
SSGH040506	502.64	40	39	39	35	62.83	125.66	4	12	10	15	9	37.5	427.7	7.7
SSGH041006	1005.28	80	39	39	35	62.83	125.66	8	12	10	15	9	37.5	930.3	7.7
SSGH050506	502.65	32	49	49	34	62.83	125.66	4	12	14	20	13	30.1	442.4	11.7
SSGH051006	1005.31	64	49	49	34	62.83	125.66	8	12	14	20	13	30.1	945	11.7
SSGH060506	508.95	27	59	59	43	63.62	127.23	4	16	18	26	17	31.4	446.1	15.7
SSGH061006	1017.9	54	59	59	43	63.62	127.23	8	16	18	26	17	31.4	955.0	15.7
SSGH080506	502.64	20	79	79	71	62.83	125.66	4	25	22	33	21	26.6	449.5	19.7
SSGH081006	1005.28	40	79	79	71	62.83	125.66	8	25	22	33	21	26.6	952	19.7

規格 Specifications

精度等級 Precision grade	DIN6h25	齒面硬度 Tooth hardness	50 ~ 55HRC
齒型 Gear teeth	直齒 Straight	表面處理 Surface treatment	研磨 Grinding
壓力角 Pressure angle	20°	齒面處理 Treatment of Tooth	研磨 Grinding
材質 Material	S45C	熱處理 Heat treatment	齒面高周波熱處理 Tooth surface induction hardened

Precision Racks

SSGH-DIN6



單位/Dimension : mm

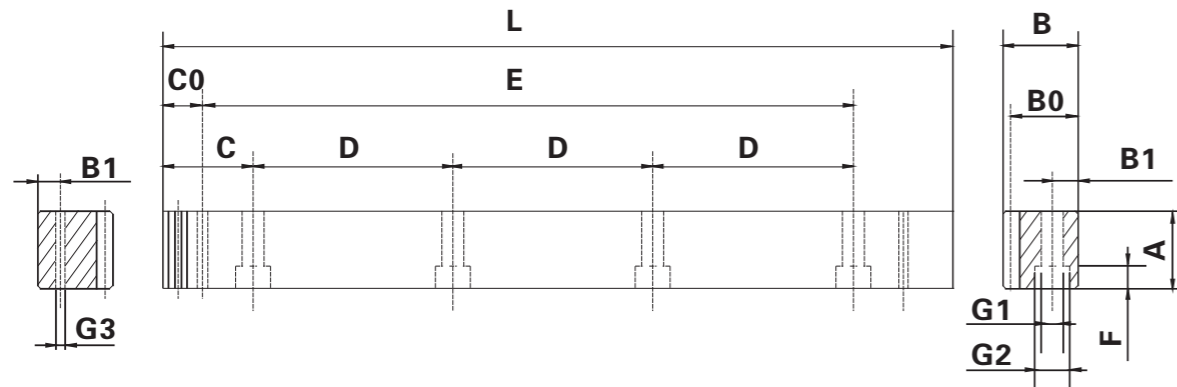
產品型號 Catalog No.	L	齒數 Tooth No.	A	B	B0	C	D	孔數 Hole No.	B1	G1	G2	F	C0	E	G3
SSGH021506	1507.97	240	24	24	22	62.83	125.66	12	8	7	11	7	31.3	942.7	5.7
SSGH022006	2010.62	320	24	24	22	62.83	125.66	16	8	7	11	7	31.3	1948.00	5.7
SSGH031506	1526.82	162	29	29	26	63.62	127.23	12	9	10	15	9	34.4	949.10	7.7
SSGH032006	2035.75	216	29	29	26	63.62	127.23	16	9	10	15	9	34.4	1967.00	7.7
SSGH041506	1507.90	120	39	39	35	62.83	125.66	12	12	10	15	9	37.5	1432.9	7.7
SSGH042006	2010.62	160	39	39	35	62.83	125.66	16	12	10	15	9	37.5	1935.60	7.7
SSGH051506	1507.96	96	49	49	34	62.83	125.66	12	12	14	20	13	30.1	1447.70	11.7
SSGH052006	2010.62	128	49	49	34	62.83	125.66	16	12	14	20	13	30.1	1950.40	11.7
SSGH061506	1526.81	81	59	59	43	63.62	127.23	12	16	18	26	17	31.4	1464.00	15.7
SSGH062006	2035.75	108	59	59	43	63.62	127.23	16	16	18	26	17	31.4	1973.00	15.7
SSGH082006	2010.61	80	79	79	71	62.83	125.66	16	25	22	33	21	26.6	1957.30	19.7

規格 Specifications

精度等級 Precision grade	DIN6h25	齒面硬度 Tooth hardness	50 ~ 55HRC
齒型 Gear teeth	直齒 Straight	表面處理 Surface treatment	研磨 Grinding
壓力角 Pressure angle	20°	齒面處理 Treatment of Tooth	研磨 Grinding
材質 Material	S45C	熱處理 Heat treatment	齒面高周波熱處理 Tooth surface induction hardened

Precision Racks

SSGH-DIN6M



單位/Dimension : mm

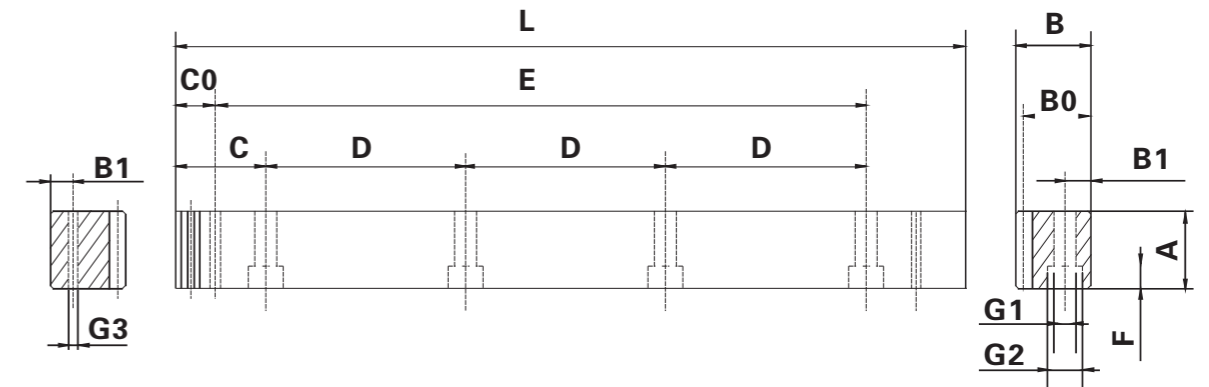
產品型號 Catalog No.	L	齒數 Tooth No.	A	B	B0	C	D	孔數 Hole No.	B1	G1	G2	F	C0	E	G3
SSGH1.50506M	499.51	106	17	17	15.5	62.44	124.88	4	8	6	9.5	7	29.0	441.5	5.7
SSGH1.51006M	999.03	212	17	17	15.5	62.44	124.88	8	8	6	9.5	7	29.0	941.0	5.7
SSGH020506M	502.64	80	24	24	22	62.83	125.66	4	8	7	11	7	31.3	440.1	5.7
SSGH021006M	1005.28	160	24	24	22	62.83	125.66	8	8	7	11	7	31.3	942.7	5.7
SSGH030506M	508.95	54	29	29	26	63.62	127.23	4	9	10	15	9	34.4	440.1	7.7
SSGH031006M	1017.9	108	29	29	26	63.62	127.23	8	9	10	15	9	34.4	949.1	7.7
SSGH040506M	502.64	40	39	39	35	62.83	125.66	4	12	10	15	9	37.5	427.7	7.7
SSGH041006M	1005.28	80	39	39	35	62.83	125.66	8	12	10	15	9	37.5	930.3	7.7
SSGH050506M	502.65	32	49	39	34	62.83	125.66	4	12	14	20	13	30.1	442.4	11.7
SSGH051006M	1005.31	64	49	39	34	62.83	125.66	8	12	14	20	13	30.1	945	11.7
SSGH060506M	508.95	27	59	49	43	63.62	127.23	4	16	18	26	17	31.4	446.1	15.7
SSGH061006M	1017.9	54	59	49	43	63.62	127.23	8	16	18	26	17	31.4	955.0	15.7
SSGH080506M	502.64	20	79	79	71	62.83	125.66	4	25	22	33	21	26.6	449.5	19.7
SSGH081006M	1005.28	40	79	79	71	62.83	125.66	8	25	22	33	21	26.6	952	19.7

規格 Specifications

精度等級 Precision grade	DIN6Mh25	齒面硬度 Tooth hardness	50 ~ 55HRC
齒型 Gear teeth	直齒 Straight	表面處理 Surface treatment	研磨 Grinding
壓力角 Pressure angle	20°	齒面處理 Treatment of Tooth	研磨 Grinding
材質 Material	S45C	熱處理 Heat treatment	齒面高周波熱處理 Tooth surface induction hardened

Precision Racks

SSFQ-DIN7



單位/Dimension : mm

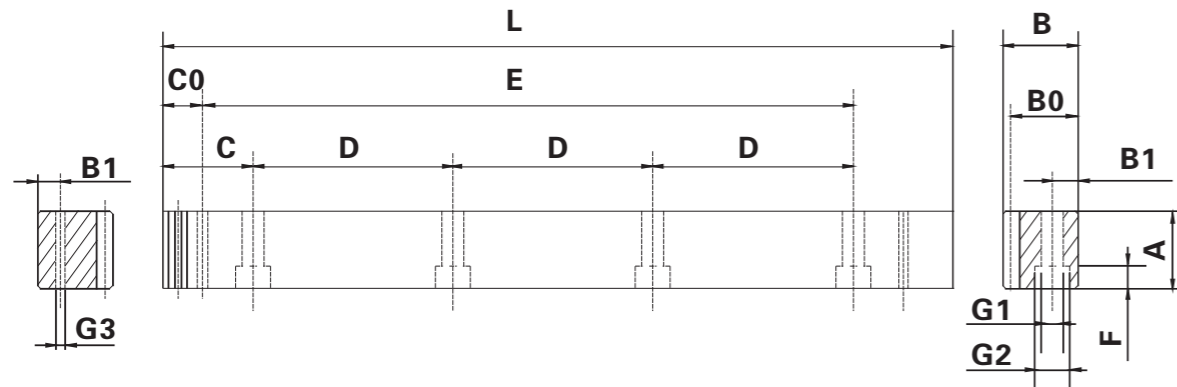
產品型號 Catalog No.	L	齒數 Tooth No.	A	B	B0	C	D	孔數 Hole No.	B1	G1	G2	F	C0	E	G3
SSFQ1.50507G	499.51	106	17	17	15.5	62.44	124.88	4	8	6	9.5	7	29.0	441.5	5.7
SSFQ1.51007G	999.03	212	17	17	15.5	62.44	124.88	8	8	6	9.5	7	29.0	941.0	5.7
SSFQ020507G	502.64	80	25	24	22	62.83	125.66	4	8	7	11	7	31.3	440.1	5.7
SSFQ021007G	1005.28	160	25	24	22	62.83	125.66	8	8	7	11	7	31.3	942.7	5.7
SSFQ030507G	508.95	54	30	29	26	63.62	127.23	4	9	10	15	9	34.4	440.1	7.7
SSFQ031007G	1017.9	108	30	29	26	63.62	127.23	8	9	10	15	9	34.4	949.1	7.7
SSFQ040507G	502.64	40	40	39	35	62.83	125.66	4	12	10	15	9	37.5	427.7	7.7
SSFQ041007G	1005.28	80	40	39	35	62.83	125.66	8	12	10	15	9	37.5	930.3	7.7
SSFQ050507G	502.65	32	50	39	34	62.83	125.66	4	12	14	20	13	30.1	442.4	11.7
SSFQ051007G	1005.31	64	50	39	34	62.83	125.66	8	12	14	20	13	30.1	945	11.7
SSFQ060507G	508.95	27	59	49	43	63.62	127.23	4	16	18	26	17	31.4	446.1	15.7
SSFQ061007G	1017.9	54	59	49	43	63.62	127.23	8	16	18	26	17	31.4	955.0	15.7
SSFQ080507G	502.64	20	79	79	71	62.83	125.66	4	25	22	33	21	26.6	449.5	19.7
SSFQ081007G	1005.28	40	79	79	71	62.83	125.66	8	25	22	33	21	26.6	952	19.7

規格 Specifications

精度等級 Precision grade	DIN7e25	齒面硬度 Tooth hardness	15 ~ 20HRC
齒型 Gear teeth	直齒 Straight	表面處理 Surface treatment	研磨 Grinding
壓力角 Pressure angle	20°	齒面處理 Treatment of Tooth	精切削 Finish cutting
材質 Material	S45C	熱處理 Heat treatment	調質熱處理 Quenched

Precision Racks

SSFQ-DIN8



單位/Dimension : mm

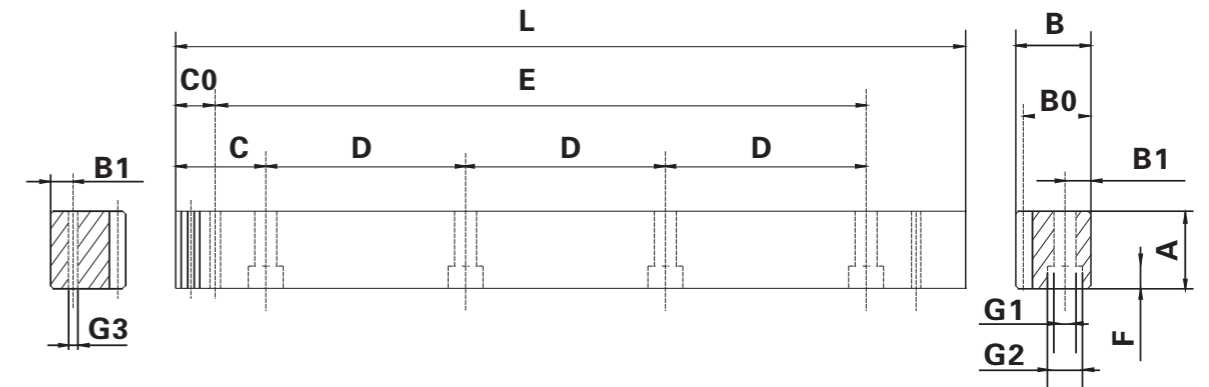
產品型號 Catalog No.	L	齒數 Tooth No.	A	B	B0	C	D	孔數 Hole No.	B1	G1	G2	F	C0	E	G3
SSFQ1.50508	499.51	106	17	17	15.5	62.44	124.88	4	8	6	9.5	7	29.0	441.5	5.7
SSFQ1.51008	999.03	212	17	17	15.5	62.44	124.88	8	8	6	9.5	7	29.0	941.0	5.7
SSFQ020508	502.64	80	25	24	22	62.83	125.66	4	8	7	11	7	31.3	440.1	5.7
SSFQ021008	1005.28	160	25	24	22	62.83	125.66	8	8	7	11	7	31.3	942.7	5.7
SSFQ030508	508.95	54	30	29	26	63.62	127.23	4	9	10	15	9	34.4	440.1	7.7
SSFQ031008	1017.9	108	30	29	26	63.62	127.23	8	9	10	15	9	34.4	949.1	7.7
SSFQ040508	502.64	40	40	39	35	62.83	125.66	4	12	10	15	9	37.5	427.7	7.7
SSFQ041008	1005.28	80	40	39	35	62.83	125.66	8	12	10	15	9	37.5	930.3	7.7
SSFQ050508	502.65	32	50	39	34	62.83	125.66	4	12	14	20	13	30.1	442.4	11.7
SSFQ051008	1005.31	64	50	39	34	62.83	125.66	8	12	14	20	13	30.1	945	11.7
SSFQ060508	508.95	27	59	49	43	63.62	127.23	4	16	18	26	17	31.4	446.1	15.7
SSFQ061008	1017.9	54	59	49	43	63.62	127.23	8	16	18	26	17	31.4	955.0	15.7
SSFQ080508	502.64	20	79	79	71	62.83	125.66	4	25	22	33	21	26.6	449.5	19.7
SSFQ081008	1005.28	40	79	79	71	62.83	125.66	8	25	22	33	21	26.6	952	19.7

規格 Specifications

精度等級 Precision grade	DIN8e27	齒面硬度 Tooth hardness	15 ~ 20HRC
齒型 Gear teeth	直齒 Straight	表面處理 Surface treatment	精切削 Finish cutting
壓力角 Pressure angle	20°	齒面處理 Treatment of Tooth	精切削 Finish cutting
材質 Material	S45C	熱處理 Heat treatment	調質熱處理 Quenched

Precision Racks

SSFH-DIN9



單位/Dimension : mm

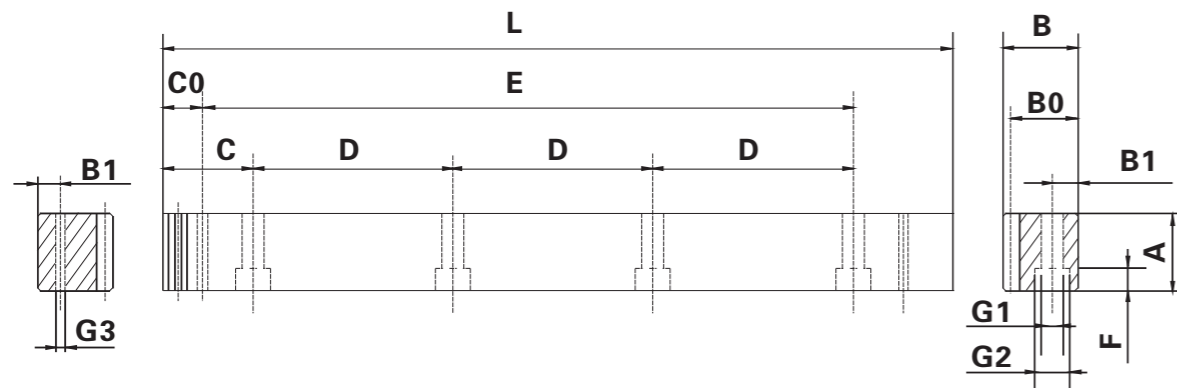
產品型號 Catalog No.	L	齒數 Tooth No.	A	B	B0	C	D	孔數 Hole No.	B1	G1	G2	F	C0	E	G3
SSFH1.50509G	499.51	106	17	17	15.5	62.44	124.88	4	8	6	9.5	7	29.0	441.5	5.7
SSFH1.51009G	999.03	212	17	17	15.5	62.44	124.88	8	8	6	9.5	7	29.0	941.0	5.7
SSFH020509G	502.64	80	24	24	22	62.83	125.66	4	8	7	11	7	31.3	440.1	5.7
SSFH021009G	1005.28	160	24	24	22	62.83	125.66	8	8	7	11	7	31.3	942.7	5.7
SSFH030509G	508.95	54	29	29	26	63.62	127.23	4	9	10	15	9	34.4	440.1	7.7
SSFH031009G	1017.9	108	29	29	26	63.62	127.23	8	9	10	15	9	34.4	949.1	7.7
SSFH040509G	502.64	40	39	39	35	62.83	125.66	4	12	10	15	9	37.5	427.7	7.7
SSFH041009G	1005.28	80	39	39	35	62.83	125.66	8	12	10	15	9	37.5	930.3	7.7
SSFH050509G	502.65	32	49	39	34	62.83	125.66	4	12	14	20	13	30.1	442.4	11.7
SSFH051009G	1005.31	64	49	39	34	62.83	125.66	8	12	14	20	13	30.1	945	11.7
SSFH060509G	508.95	27	59	49	43	63.62	127.23	4	16	18	26	17	31.4	446.1	15.7
SSFH061009G	1017.9	54	59	49	43	63.62	127.23	8	16	18	26	17	31.4	955.0	15.7
SSFH080509G	502.64	20	79	79	71	62.83	125.66	4	25	22	33	21	26.6	449.5	19.7
SSFH081009G	1005.28	40	79	79	71	62.83	125.66	8	25	22	33	21	26.6	952	19.7

規格 Specifications

精度等級 Precision grade	DIN9e27	齒面硬度 Tooth hardness	50 ~ 55HRC
齒型 Gear teeth	直齒 Straight	表面處理 Surface treatment	研磨 Grinding
壓力角 Pressure angle	20°	齒面處理 Treatment of Tooth	精切削 Finish cutting
材質 Material	S45C	熱處理 Heat treatment	齒面高周波熱處理 Tooth surface induction hardened

Precision Racks

SSF-DIN9



單位/Dimension : mm

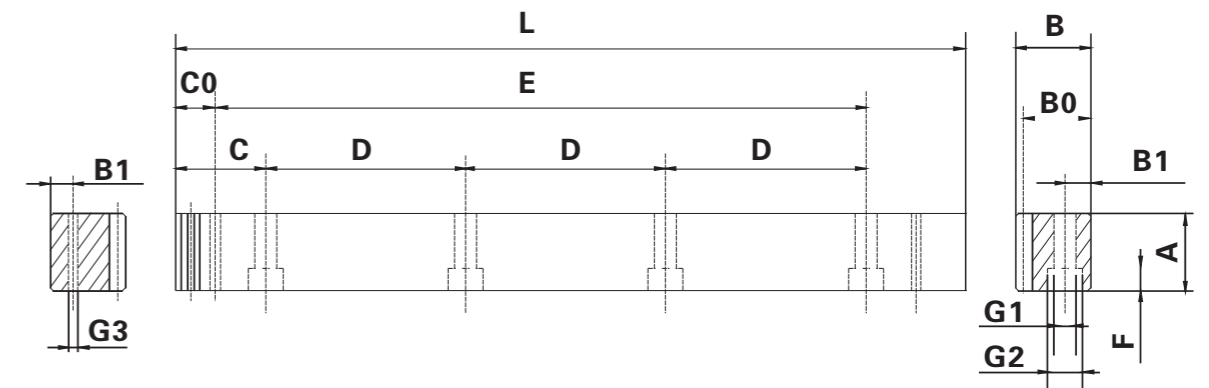
產品型號 Catalog No.	L	齒數 Tooth No.	A	B	B0	C	D	孔數 Hole No.	B1	G1	G2	F	C0	E	G3
SSF1.50509	499.51	106	17	17	15.5	62.44	124.88	4	8	6	9.5	7	29.0	441.5	5.7
SSF1.51009	999.03	212	17	17	15.5	62.44	124.88	8	8	6	9.5	7	29.0	941.0	5.7
SSF020509	502.64	80	24	24	22	62.83	125.66	4	8	7	11	7	31.3	440.1	5.7
SSF021009	1005.28	160	24	24	22	62.83	125.66	8	8	7	11	7	31.3	942.7	5.7
SSF030509	508.95	54	29	29	26	63.62	127.23	4	9	10	15	9	34.4	440.1	7.7
SSF031009	1017.9	108	29	29	26	63.62	127.23	8	9	10	15	9	34.4	949.1	7.7
SSF040509	502.64	40	39	39	35	62.83	125.66	4	12	10	15	9	37.5	427.7	7.7
SSF041009	1005.28	80	39	39	35	62.83	125.66	8	12	10	15	9	37.5	930.3	7.7
SSF050509	502.65	32	49	39	34	62.83	125.66	4	12	14	20	13	30.1	442.4	11.7
SSF051009	1005.31	64	49	39	34	62.83	125.66	8	12	14	20	13	30.1	945	11.7
SSF060509	508.95	27	59	49	43	63.62	127.23	4	16	18	26	17	31.4	446.1	15.7
SSF061009	1017.9	54	59	49	43	63.62	127.23	8	16	18	26	17	31.4	955.0	15.7
SSF080509	502.64	20	79	79	71	62.83	125.66	4	25	22	33	21	26.6	449.5	19.7
SSF081009	1005.28	40	79	79	71	62.83	125.66	8	25	22	33	21	26.6	952	19.7

規格 Specifications

精度等級 Precision grade	DIN9e27	齒面硬度 Tooth hardness	15HRC以下 Less than 15HRC
齒型 Gear teeth	直齒 Straight	表面處理 Surface treatment	精切削 Finish cutting
壓力角 Pressure angle	20°	齒面處理 Treatment of Tooth	精切削 Finish cutting
材質 Material	S45C	熱處理 Heat treatment	—————

Precision Racks

SSFH-DIN10



單位/Dimension : mm

產品型號 Catalog No.	L	齒數 Tooth No.	A	B	B0	C	D	孔數 Hole No.	B1	G1	G2	F	C0	E	G3
SSFH1.50510	499.51	106	17	17	15.5	62.44	124.88	4	8	6	9.5	7	29.0	441.5	5.7
SSFH1.51010	999.03	212	17	17	15.5	62.44	124.88	8	8	6	9.5	7	29.0	941.0	5.7
SSFH020510	502.64	80	24	24	22	62.83	125.66	4	8	7	11	7	31.3	440.1	5.7
SSFH021010	1005.28	160	24	24	22	62.83	125.66	8	8	7	11	7	31.3	942.7	5.7
SSFH030510	508.95	54	29	29	26	63.62	127.23	4	9	10	15	9	34.4	440.1	7.7
SSFH031010	1017.9	108	29	29	26	63.62	127.23	8	9	10	15	9	34.4	949.1	7.7
SSFH040510	502.64	40	39	39	35	62.83	125.66	4	12	10	15	9	37.5	427.7	7.7
SSFH041010	1005.28	80	39	39	35	62.83	125.66	8	12	10	15	9	37.5	930.3	7.7
SSFH050510	502.65	32	49	39	34	62.83	125.66	4	12	14	20	13	30.1	442.4	11.7
SSFH051010	1005.31	64	49	39	34	62.83	125.66	8	12	14	20	13	30.1	945	11.7
SSFH060510	508.95	27	59	49	43	63.62	127.23	4	16	18	26	17	31.4	446.1	15.7
SSFH061010	1017.9	54	59	49	43	63.62	127.23	8	16	18	26	17	31.4	955.0	15.7
SSFH080510	502.64	20	79	79	71	62.83	125.66	4	25	22	33	21	26.6	449.5	19.7
SSFH081010	1005.28	40	79	79	71	62.83	125.66	8	25	22	33	21	26.6	952	19.7

規格 Specifications

精度等級 Precision grade	DIN10e27	齒面硬度 Tooth hardness	50 ~ 55HRC
齒型 Gear teeth	直齒 Straight	表面處理 Surface treatment	精切削 Finish cutting
壓力角 Pressure angle	20°	齒面處理 Treatment of Tooth	精切削 Finish cutting
材質 Material	S45C	熱處理 Heat treatment	齒面高周波熱處理 Tooth surface induction hardened