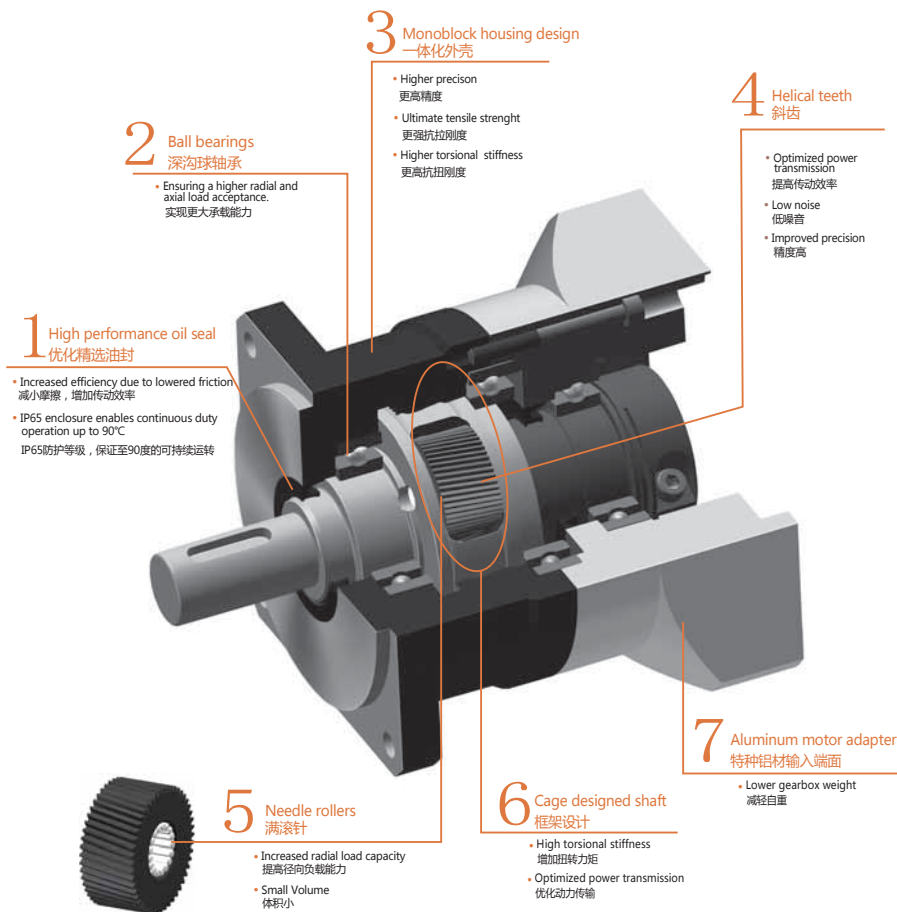




此标准系列可以在中等精度要求的不同领域使用。

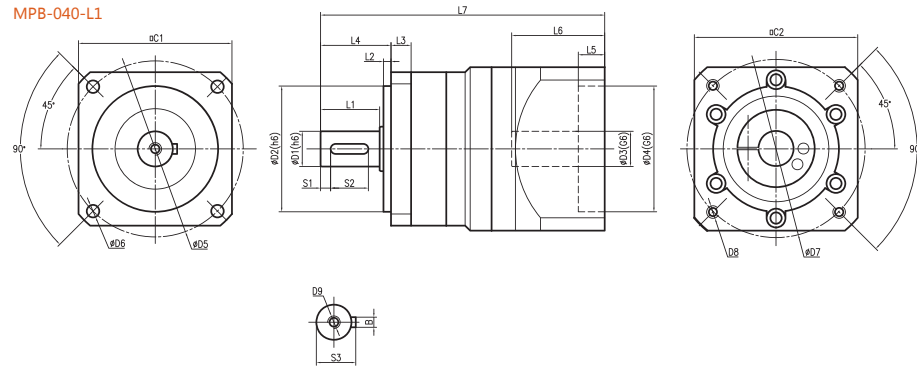
Standard series for servo applications that do not require optimum precision.



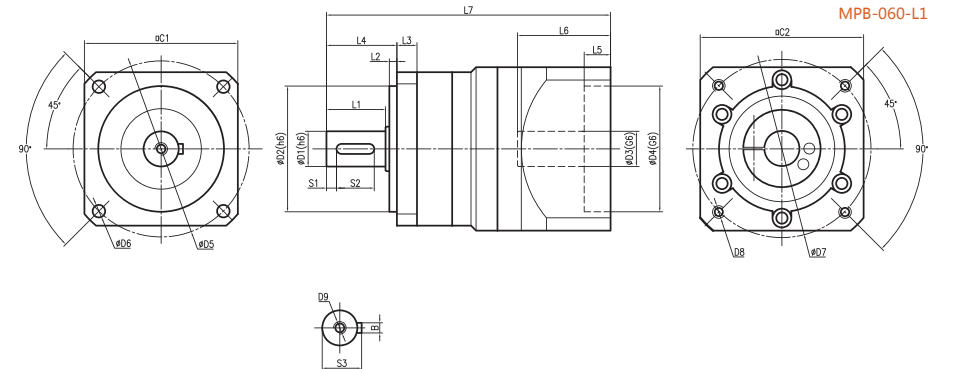
造型数据:
Selection data:

扭矩 (Nm)	8-340
速比	3-100
背隙 (arcmin)	5-8
最大工作温度 (°C)	90
噪音 (dB)	64-77

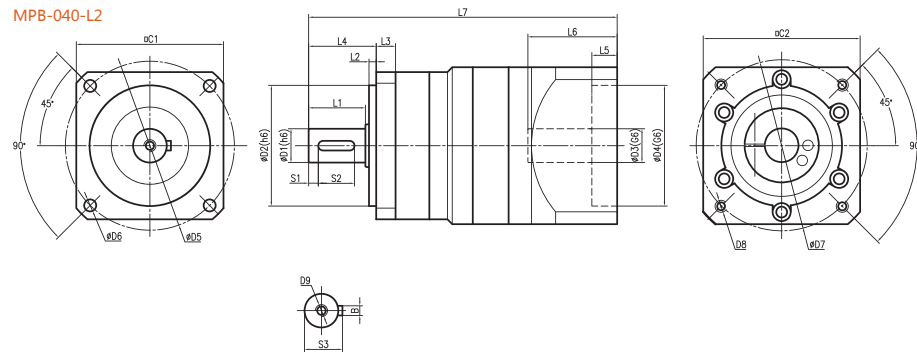
Nominal output torque (Nm)	8-340
Reduction ratio	3-100
Backlash (arcmin)	5-8
Max.working temperature (°C)	90
Noise (dB)	64-77



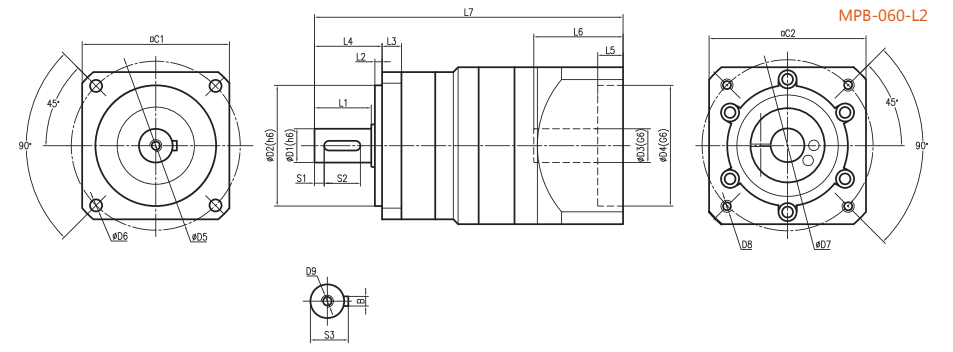
Flange	D1	D2	D3*	D4*	D5	D6	D7*	D8*	D9	L1	L2	L3	L4	L5*	L6*	L7*	C1	C2*	S1	S2	S3	B
Type I	Φ12	Φ35	Φ8	Φ30	Φ48	4-Φ3.4	Φ46	4-M4X10	M4X10	18	3	4	22.5	5	32	88	45	40	2	14	13.5	4
Type II	Φ12	Φ35	Φ11	Φ50	Φ48	4-Φ3.4	Φ70	4-M4X10	M4X10	18	3	4	22.5	5	32	88	45	60	2	14	13.5	4



Flange	D1	D2	D3*	D4*	D5	D6	D7*	D8*	D9	L1	L2	L3	L4	L5*	L6*	L7*	C1	C2*	S1	S2	S3	B
Type I	Φ14	Φ50	Φ11	Φ50	Φ70	4-Φ5	Φ70	4-M4X10	M5X13	23.5	3	8	28	10.5	37	113	61	65	4	15	15.7	4
Type II	Φ14	Φ50	Φ14	Φ50	Φ70	4-Φ5	Φ70	4-M4X10	M5X13	23.5	3	8	28	10.5	37	113	61	65	4	15	15.7	4



Flange	D1	D2	D3*	D4*	D5	D6	D7*	D8*	D9	L1	L2	L3	L4	L5*	L6*	L7*	C1	C2*	S1	S2	S3	B
Type I	Φ12	Φ35	Φ8	Φ30	Φ48	4-Φ3.4	Φ46	4-M4X10	M4X10	18	3	4	22.5	5	32	104.5	45	40	2	14	13.5	4
Type II	Φ12	Φ35	Φ8	Φ30	Φ48	4-Φ3.4	Φ45	4-M3X8	M4X10	18	3	4	22.5	5	32	104.5	45	40	2	14	13.5	4



Flange	D1	D2	D3*	D4*	D5	D6	D7*	D8*	D9	L1	L2	L3	L4	L5*	L6*	L7*	C1	C2*	S1	S2	S3	B
Type I	Φ14	Φ50	Φ8	Φ30	Φ70	4-Φ5	Φ45	4-M3X8	M5X13	23.5	3	8	28	10.5	37	133	61	40	4	15	15.7	4
Type II	Φ14	Φ50	Φ14	Φ50	Φ70	4-Φ5	Φ70	4-M4X10	M5X13	23.5	3	8	28	10.5	37	133	61	65	4	15	15.7	4

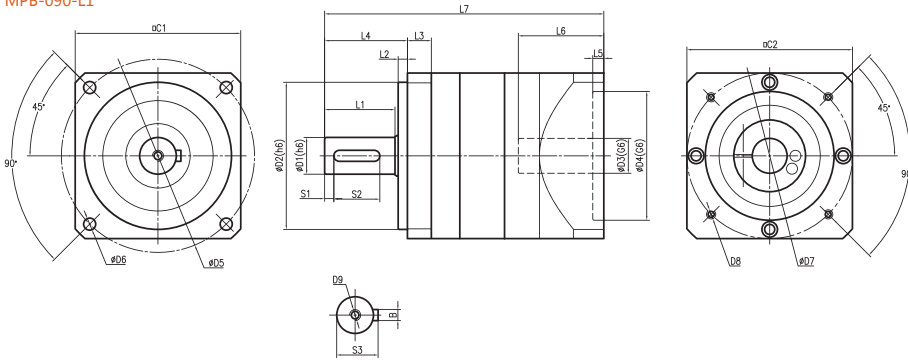
*Dimensions based on servo-motor, please contact us for custom made order.
注有 * 尺寸：代表可根据客户需求定制产品，如有需要，请联系我们！

*Dimensions based on servo-motor, please contact us for custom made order.
注有 * 尺寸：代表可根据客户需求定制产品，如有需要，请联系我们！

MPB

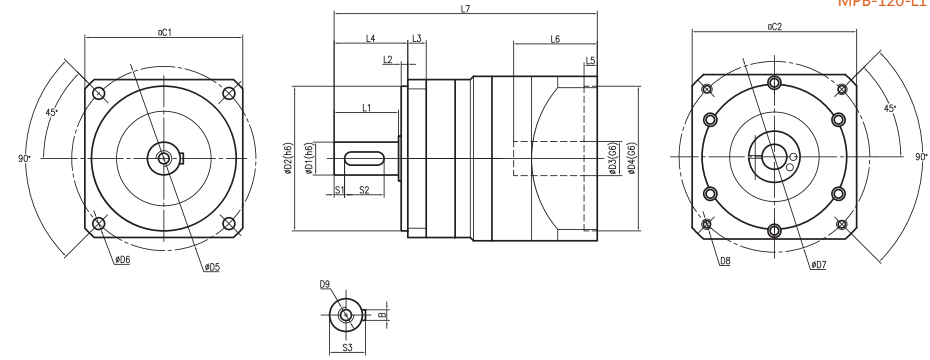
MPB

MPB-090-L1



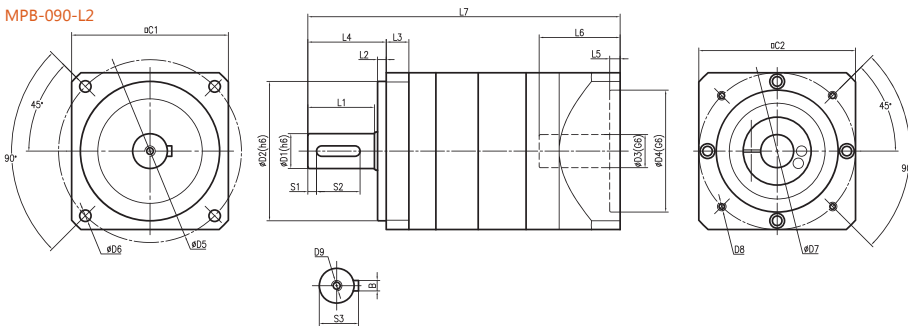
Flange	D1	D2	D3*	D4*	D5	D6	D7*	D8*	D9	L1	L2	L3	L4	L5*	L6*	L7*	C1	C2*	S1	S2	S3	B
Type I	Φ20	Φ80	Φ14	Φ50	Φ105	4-Φ6.6	Φ70	4-M5X12	M6X15	39	5	13	45	10.5	37	148.3	90	65	5	25	22.5	6
Type II	Φ20	Φ80	Φ19	Φ70	Φ105	4-Φ6.6	Φ90	4-M6X15	M6X15	39	5	13	45	6	46.5	151.8	90	90	5	25	22.5	6
Type III	Φ20	Φ80	Φ22	Φ110	Φ105	4-Φ6.6	Φ145	4-M8X15	M6X15	39	5	13	45	6	54.5	159.8	90	130	5	25	22.5	6
Type IV	Φ20	Φ80	Φ24	Φ110	Φ105	4-Φ6.6	Φ145	4-M8X15	M6X15	39	5	13	45	6	54.5	159.8	90	130	5	25	22.5	6

MPB-120-L1



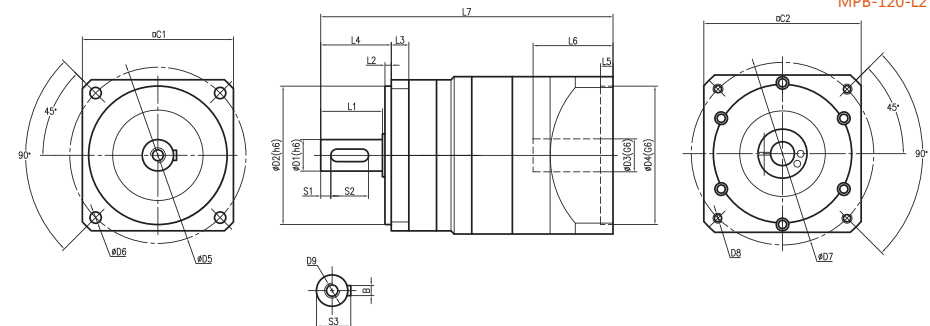
Flange	D1	D2	D3*	D4*	D5	D6	D7*	D8*	D9	L1	L2	L3	L4	L5*	L6*	L7*	C1	C2*	S1	S2	S3	B
Type I	Φ25	Φ110	Φ19	Φ70	Φ140	4-Φ9	Φ90	4-M5X12	M10X24	50	5	14	56	6	38.5	172.5	120	90	8	30	28	8
Type II	Φ25	Φ110	Φ22	Φ110	Φ140	4-Φ9	Φ145	4-M8X15	M10X24	50	5	14	56	10	63	192	120	125	8	30	28	8
Type III	Φ25	Φ110	Φ24	Φ110	Φ140	4-Φ9	Φ145	4-M8X15	M10X24	50	5	14	56	10	63	192	120	125	8	30	28	8

MPB-090-L2



Flange	D1	D2	D3*	D4*	D5	D6	D7*	D8*	D9	L1	L2	L3	L4	L5*	L6*	L7*	C1	C2*	S1	S2	S3	B
Type I	Φ20	Φ80	Φ14	Φ50	Φ105	4-Φ6.6	Φ70	4-M5X12	M6X15	39	5	13	45	10.5	37	163.3	90	65	5	25	22.5	6
Type II	Φ20	Φ80	Φ19	Φ70	Φ105	4-Φ6.6	Φ90	4-M6X15	M6X15	39	5	13	45	6	46.5	179.3	90	90	5	25	22.5	6
Type III	Φ20	Φ80	Φ22	Φ110	Φ105	4-Φ6.6	Φ145	4-M8X15	M6X15	39	5	13	45	6	54.5	187.3	90	130	5	25	22.5	6
Type IV	Φ20	Φ80	Φ24	Φ110	Φ105	4-Φ6.6	Φ145	4-M8X15	M6X15	39	5	13	45	6	54.5	187.3	90	130	5	25	22.5	6

MPB-120-L2

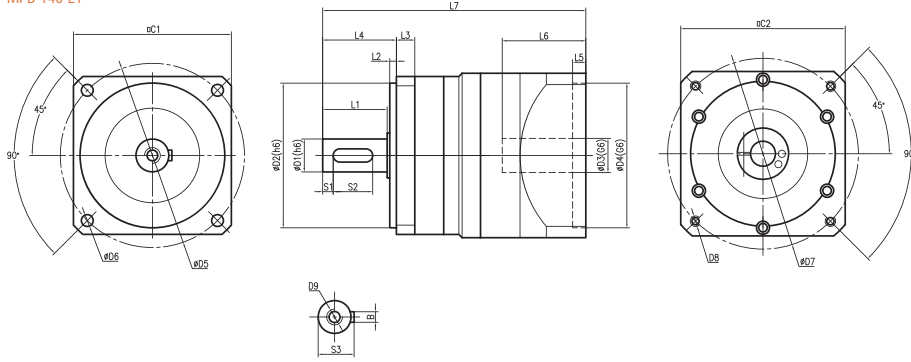


Flange	D1	D2	D3*	D4*	D5	D6	D7*	D8*	D9	L1	L2	L3	L4	L5*	L6*	L7*	C1	C2*	S1	S2	S3	B
Type I	Φ25	Φ110	Φ19	Φ70	Φ140	4-Φ9	Φ90	4-M5X12	M10X24	50	5	14	56	6	46.5	200.5	120	90	8	30	28	8
Type II	Φ25	Φ110	Φ22	Φ110	Φ140	4-Φ9	Φ145	4-M8X15	M10X24	50	5	14	56	10	63	226	120	125	8	30	28	8
Type III	Φ25	Φ110	Φ24	Φ110	Φ140	4-Φ9	Φ145	4-M8X15	M10X24	50	5	14	56	10	63	226	120	125	8	30	28	8

*Dimensions based on servo-motor, please contact us for custom made order.
注有 * 尺寸：代表可根据客户需求定制产品，如有需要，请联系我们！

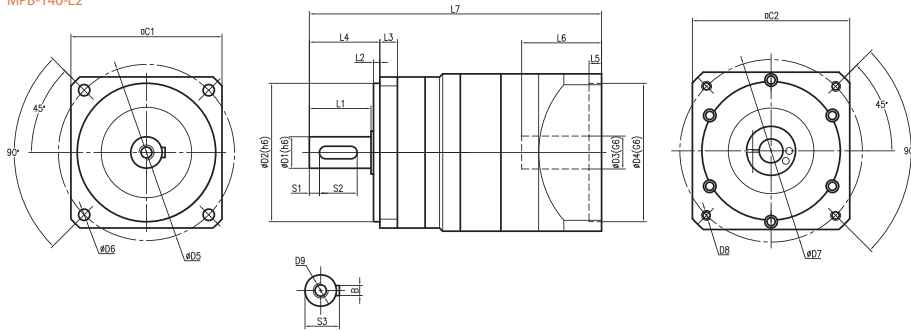
*Dimensions based on servo-motor, please contact us for custom made order.
注有 * 尺寸：代表可根据客户需求定制产品，如有需要，请联系我们！

MPB-140-L1



Flange	D1	D2	D3*	D4*	D5	D6	D7*	D8*	D9	L1	L2	L3	L4	L5*	L6*	L7*	C1	C2*	S1	S2	S3	B
Type I	Φ40	Φ130	Φ24	Φ110	Φ165	4-Φ11	Φ145	4-M8X15	M16X30	80	5	15	86.5	10	67	237	142	130	10	55	43	12
Type II	Φ40	Φ130	Φ32	Φ114.3	Φ165	4-Φ11	Φ145	4-M10X20	M16X30	80	5	15	86.5	10	67	250	142	155	10	55	43	12
Type III	Φ40	Φ130	Φ35	Φ114.3	Φ165	4-Φ11	Φ145	4-M12X20	M16X30	80	5	15	86.5	10	80	250	142	180	10	55	43	12

MPB-140-L2



Flange	D1	D2	D3*	D4*	D5	D6	D7*	D8*	D9	L1	L2	L3	L4	L5*	L6*	L7*	C1	C2*	S1	S2	S3	B
Type I	Φ40	Φ130	Φ24	Φ110	Φ165	4-Φ11	Φ145	4-M8X15	M16X30	80	5	15	86.5	10	60	274	142	125	10	55	43	12
Type II	Φ40	Φ130	Φ32	Φ114.3	Φ165	4-Φ11	Φ145	4-M10X20	M16X30	80	5	15	86.5	10	67	289	142	155	10	55	43	12
Type III	Φ40	Φ130	Φ35	Φ114.3	Φ165	4-Φ11	Φ145	4-M12X20	M16X30	80	5	15	86.5	10	80	292	142	180	10	55	43	12

*Dimensions based on servo-motor, please contact us for custom made order.
注有 * 尺寸：代表可根据客户需求定制产品，如有需要，请联系我们！

MPB-040																				
Symb.	i	T _{2N}	T _{2Not}	n _{1N}	n _{1Max}	j _t	C _{2t}	F _{Z2NMax}	F _{Z2AMax}	J ₁	η	L _h	T	Lub	PC	MP	dB			
Unit		Nm	Nm	rpm	rpm	arcmin	Nm/arcmin	N	N	kgcm ²	%	h	°C							
I STAGE	3	8								0.031										
	4	10								0.022										
	5	10								0.019										
	6	10								0.019	≥95									
	7	10					≤5			0.017										
	8	10								0.017										
	9	8		2XT _{2N}	4000	8000		1.1	610	450	0.017		>20000	-15~45	Life Lubrication 终身润滑	IP65	Any 任何方向		≤64	
	10	8								0.016										
	II STAGE	15	8								0.015									
		20	10								0.007									
25		10					≤8			0.007	≥90									
50		10								0.015										
80		10								0.007										
100	8								0.007											

MPB-060																				
Symb.	i	T _{2N}	T _{2Not}	n _{1N}	n _{1Max}	j _t	C _{2t}	F _{Z2NMax}	F _{Z2AMax}	J ₁	η	L _h	T	Lub	PC	MP	dB			
Unit		Nm	Nm	rpm	rpm	arcmin	Nm/arcmin	N	N	kgcm ²	%	h	°C							
I STAGE	3	20								0.135										
	4	30								0.093										
	5	35								0.078										
	6	35								0.078	≥95									
	7	35					≤5			0.075										
	8	35								0.075										
	9	20		2XT _{2N}	3000	6000		2.5	950	750	0.065		>20000	-15~45	Life Lubrication 终身润滑	IP65	Any 任何方向		≤68	
	10	20								0.063										
	II STAGE	15	20								0.065									
		20	30								0.075									
25		35					≤8			0.075	≥90									
50		35								0.076										
80		35								0.075										
100	20								0.075											

MPB-090																																
Symb.	i	T _{2N}	T _{2Not}	n _{1N}	n _{1Max}	j _t	C _{2t}	F _{Z2RMax}	F _{Z2AMax}	J ₁	η	L _h	T	Lub	PC	MP	dB															
Unit		N _m	N _m	rpm	rpm	arcmin	Nm/arcmin	N	N	kgcm ²	%	h	°C																			
I STAGE	3	55	2XT _{2N}	3000	6000	≤5	6.5	1700	1600	0.77	≥95	> 20000	-15~45	Life Lubrication 终身润滑	IP65	Any 任何方向	≤72															
	4	60								0.52																						
	5	75								0.45																						
	6	75								0.45																						
	7	75								0.39																						
	8	75								0.39																						
	9	55								0.45																						
	10	55								0.74																						
	II STAGE	15								55								2XT _{2N}	3000	6000	≤8	6.5	1700	1600	0.71	≥90	> 20000	-15~45	Life Lubrication 终身润滑	IP65	Any 任何方向	≤72
		20								75															0.44							
25		75	0.44																													
50		75	0.51																													
80		75	0.50																													
100		55	0.44																													

MPB-140																																
Symb.	i	T _{2N}	T _{2Not}	n _{1N}	n _{1Max}	j _t	C _{2t}	F _{Z2RMax}	F _{Z2AMax}	J ₁	η	L _h	T	Lub	PC	MP	dB															
Unit		N _m	N _m	rpm	rpm	arcmin	Nm/arcmin	N	N	kgcm ²	%	h	°C																			
I STAGE	3	240	2XT _{2N}	2300	4000	≤5	41	4000	3600	12.14	≥95	> 20000	-15~45	Life Lubrication 终身润滑	IP65	Any 任何方向	≤77															
	4	260								7.78																						
	5	340								6.07																						
	6	340								6.07																						
	7	340								4.63																						
	8	340								4.63																						
	9	240								6.12																						
	10	240								12.37																						
	II STAGE	15								260								2XT _{2N}	2300	4000	≤8	41	4000	3600	12.35	≥90	> 20000	-15~45	Life Lubrication 终身润滑	IP65	Any 任何方向	≤77
		20								340															6.65							
25		340	5.81																													
50		340	6.07																													
80		340	6.65																													
100		240	5.81																													

MPB-120																																
Symb.	i	T _{2N}	T _{2Not}	n _{1N}	n _{1Max}	j _t	C _{2t}	F _{Z2RMax}	F _{Z2AMax}	J ₁	η	L _h	T	Lub	PC	MP	dB															
Unit		N _m	N _m	rpm	rpm	arcmin	Nm/arcmin	N	N	kgcm ²	%	h	°C																			
I STAGE	3	140	2XT _{2N}	2600	4800	≤5	13	2400	2100	2.63	≥95	> 20000	-15~45	Life Lubrication 终身润滑	IP65	Any 任何方向	≤75															
	4	180								1.79																						
	5	180								1.53																						
	6	180								1.53																						
	7	180								1.32																						
	8	180								1.32																						
	9	180								1.32																						
	10	140								1.53																						
	II STAGE	15								140								2XT _{2N}	2600	4800	≤8	13	2400	2100	1.75	≥90	> 20000	-15~45	Life Lubrication 终身润滑	IP65	Any 任何方向	≤75
		20								180															1.50							
25		180	1.49																													
50		180	1.53																													
80		180	1.50																													
100		140	1.49																													

Efficiency

The efficiency of planetary reducers varies with several parameters such as ratio, input speed, temperature, lubrication conditions, etc.
The efficiency was measured under the following working conditions:

Input speed (rpm)	3000
Operating temperature (°C)	25
Lubricant	Standard

效率特性

减速机的效率一般因减速比、输入转速、负载转速、温度、润滑条件而异。
在下列测定条件下，各系列的效率如下所示。此外，图表的数值均为平均值。

输入转速 (rpm)	3000
环境温度 (°C)	25
润滑剂	标准润滑剂

