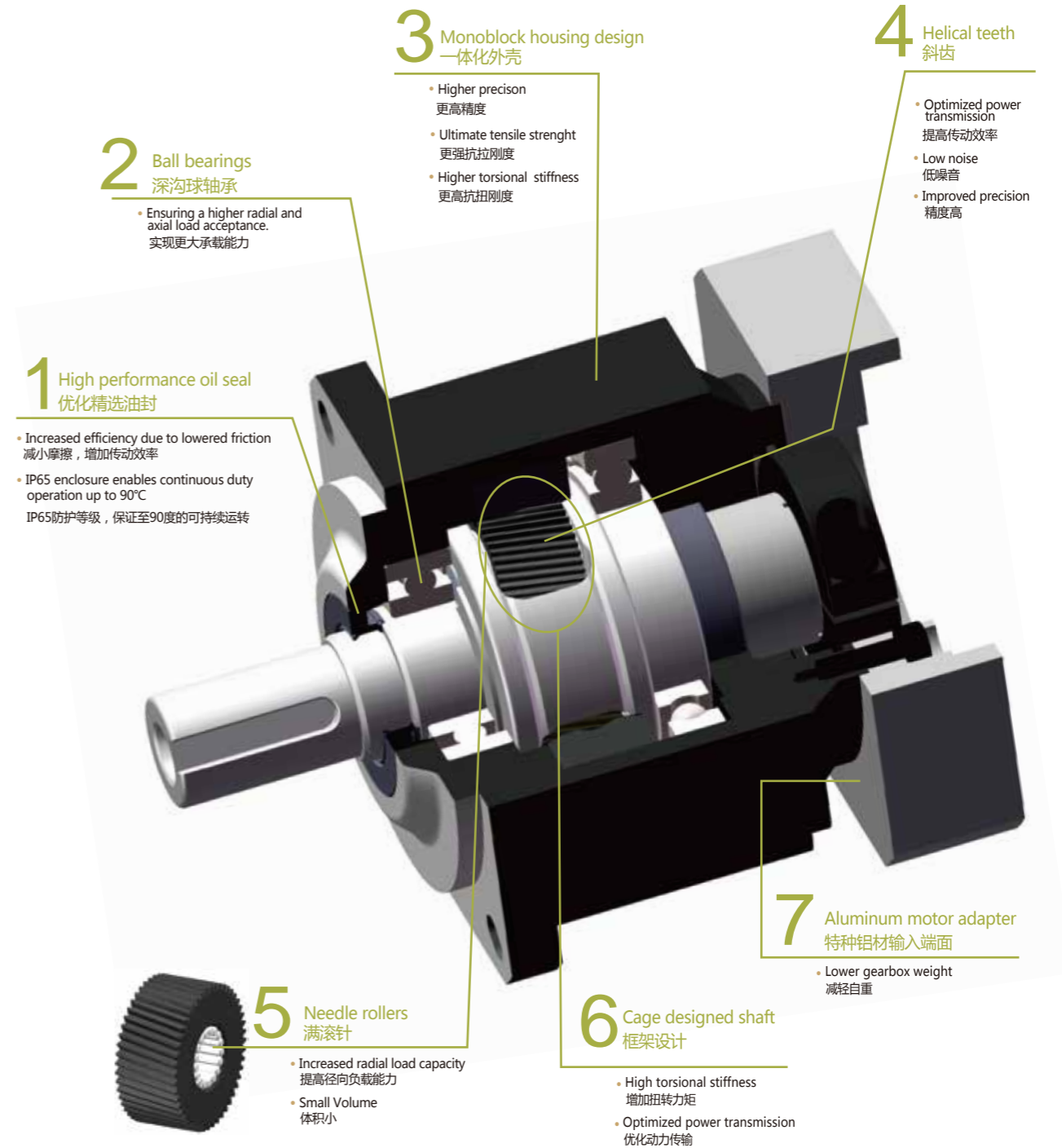




此标准系列可以在中等精度要求的不同领域使用。

Standard series for servo applications that do not require optimum precision.

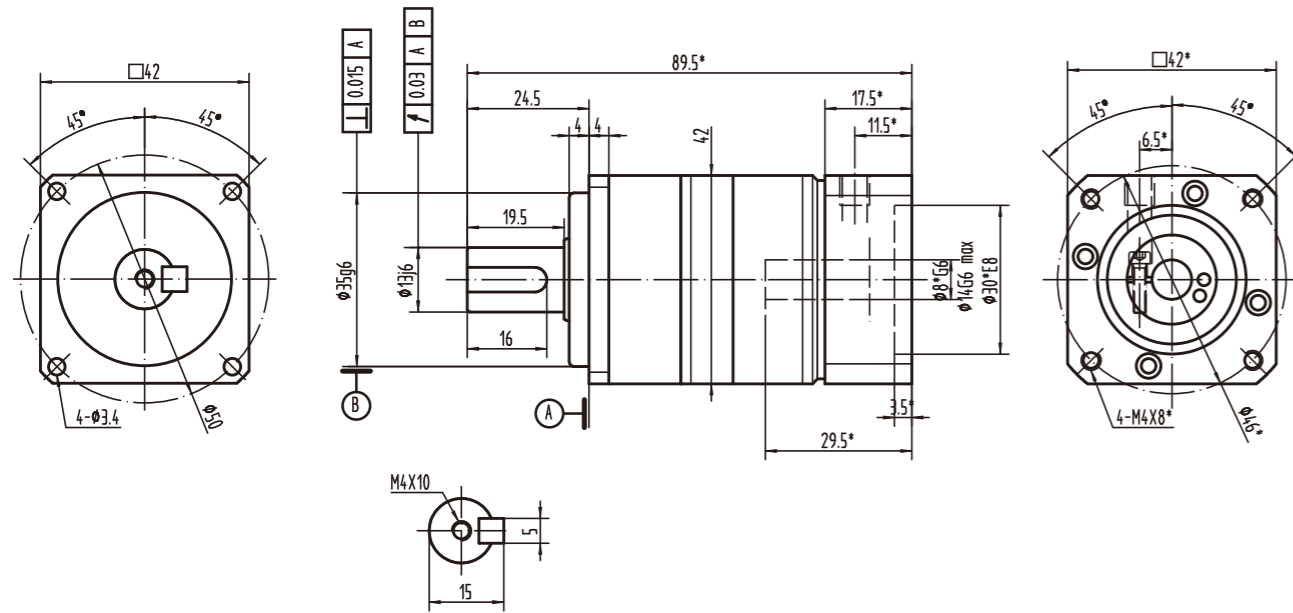


**造型数据:
Selection data:**

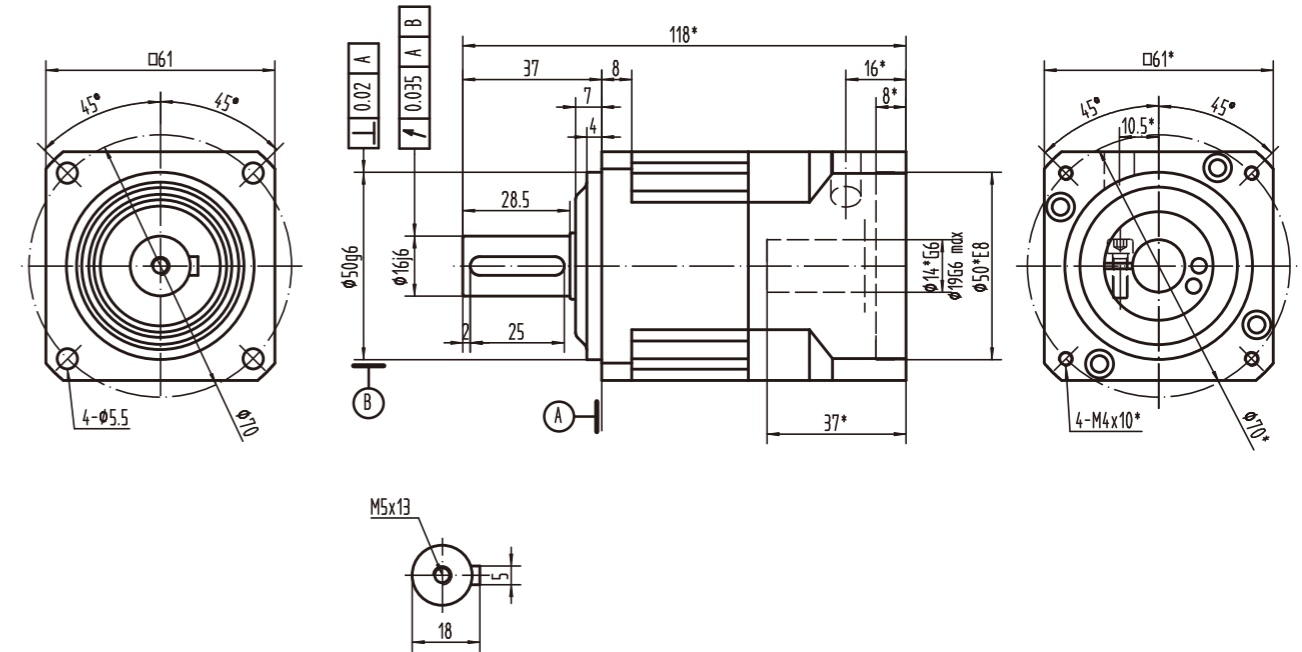
扭距 (Nm)	14-260
速比	3-100
背隙 (arcmin)	3-5
最大工作温度 (°C)	90
噪音 (dB)	63-70

Nominal output torque (Nm)	14-260
Reduction ratio	3-100
Backlash (arcmin)	3-5
Max.working temperature (°C)	90
Noise (dB)	63-70

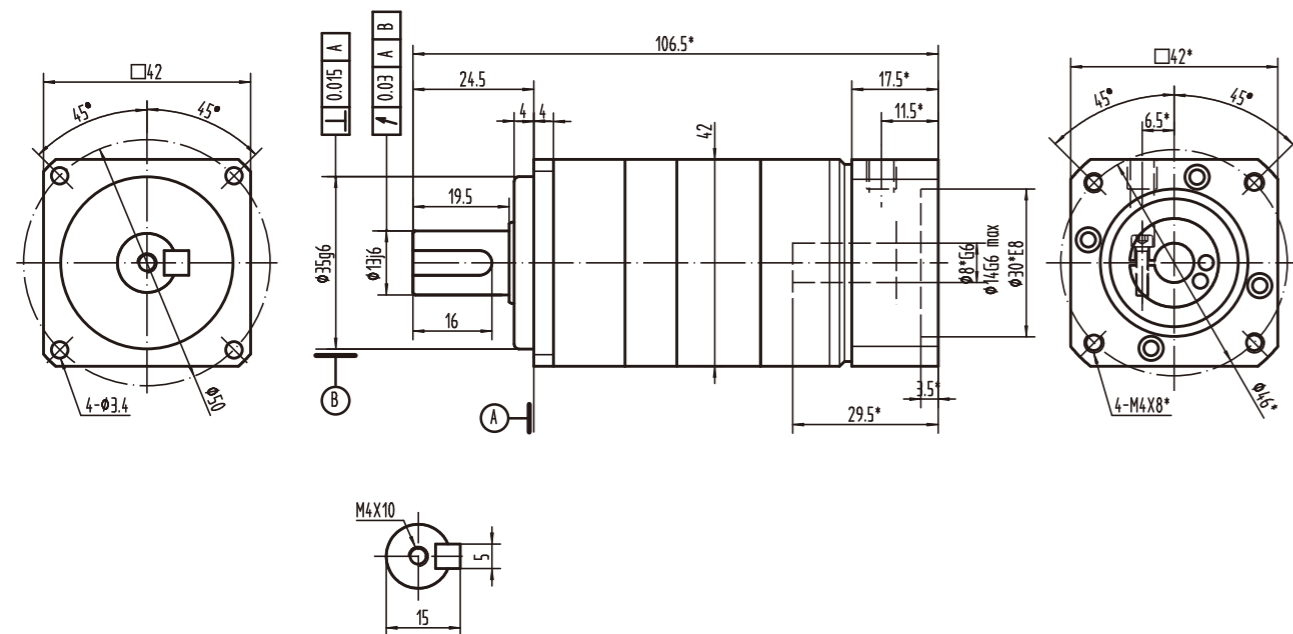
MPVB-040-L1



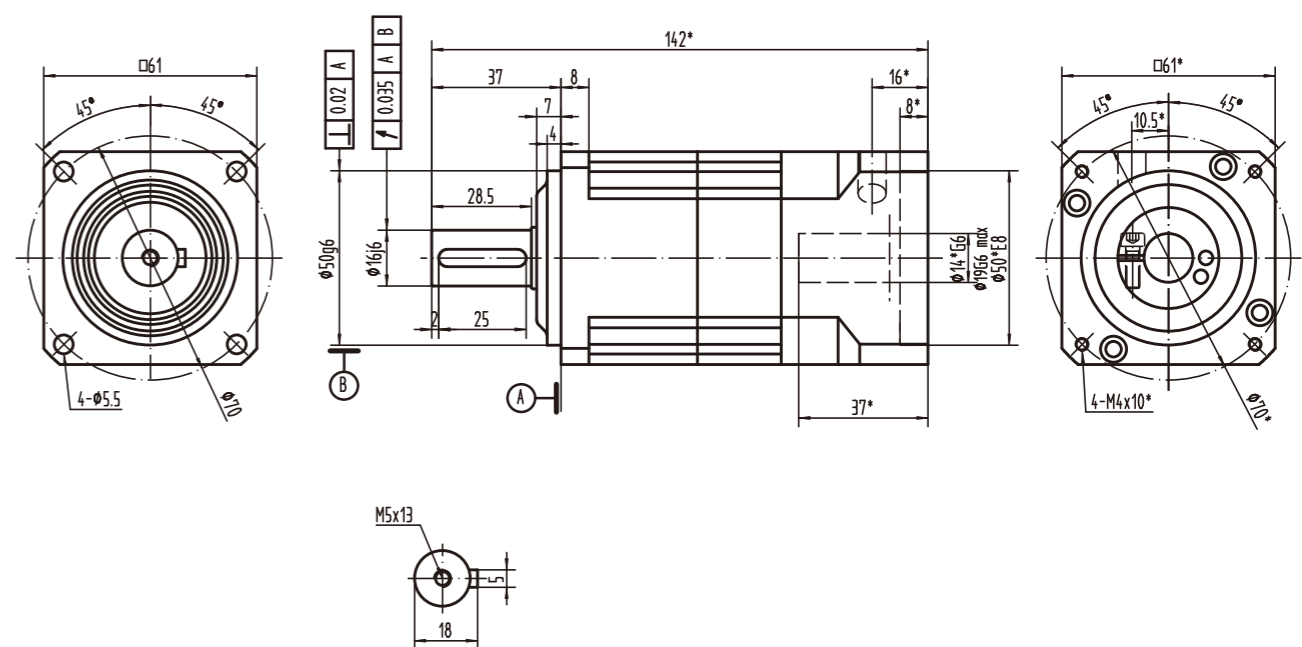
MPVB-060A-L1



MPVB-040-L2



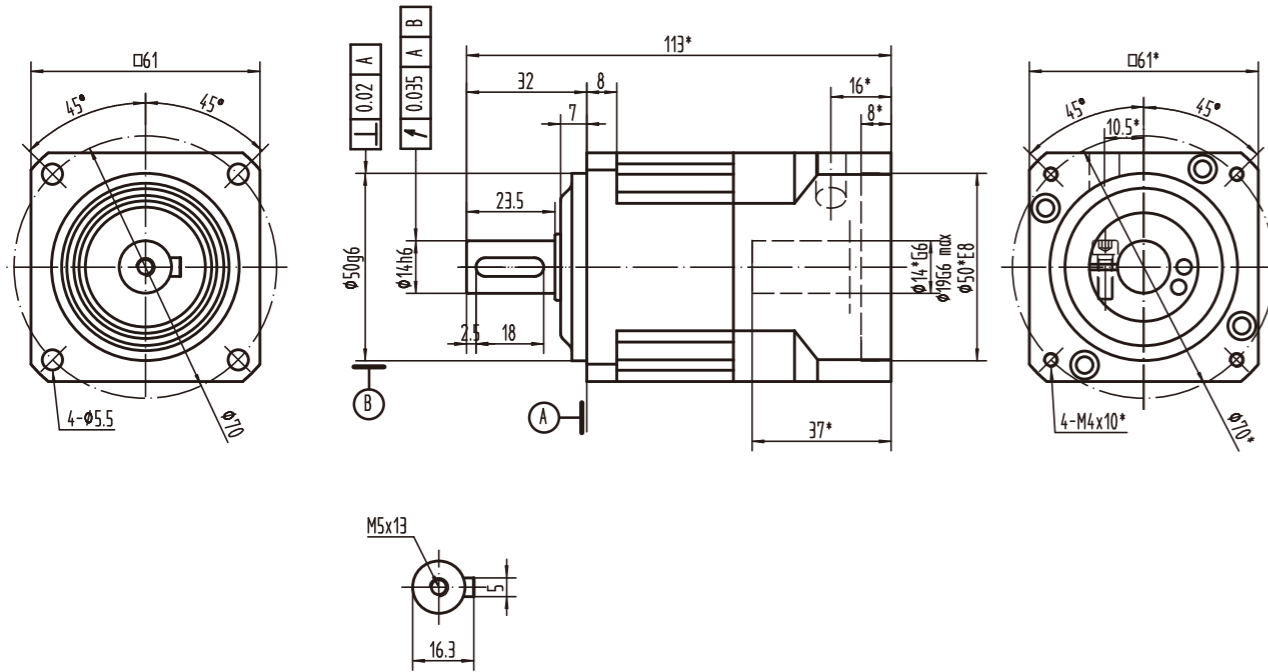
MPVB-060A-L2



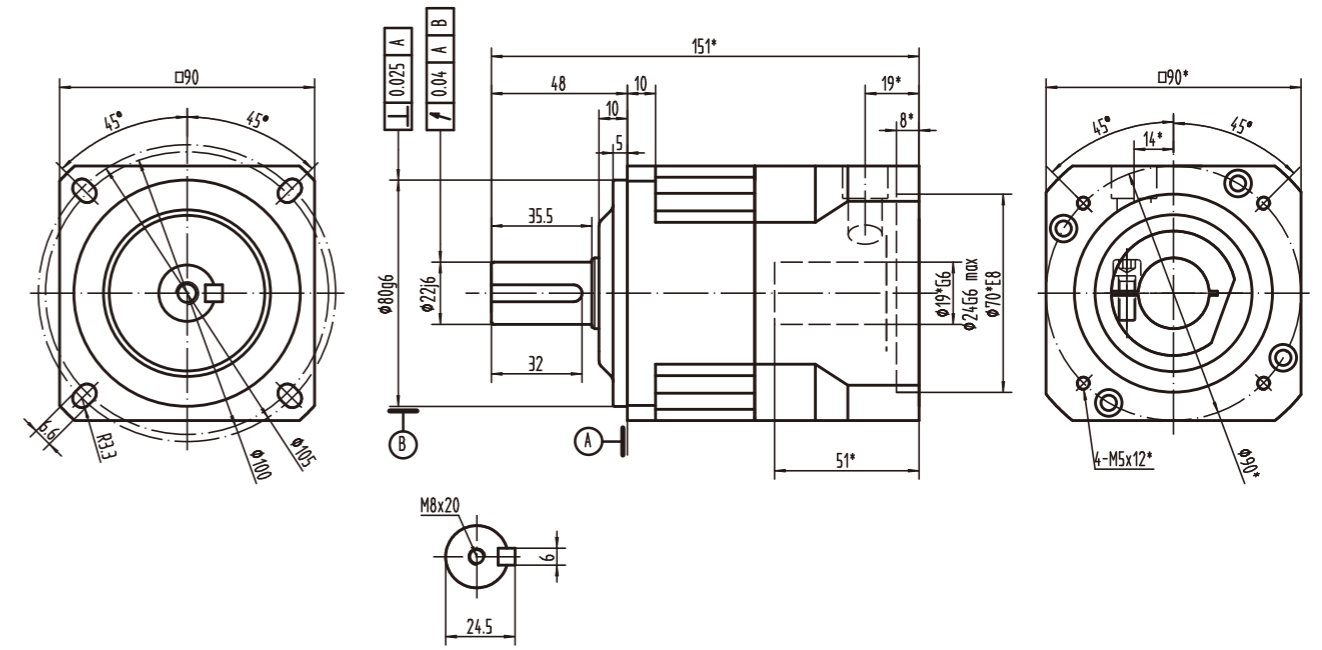
*Dimensions based on servo-motor, please contact us for custom made order.
注有 * 尺寸：代表可根据客户需求定制产品，如有需要，请联系我们！

*Dimensions based on servo-motor, please contact us for custom made order.
注有 * 尺寸：代表可根据客户需求定制产品，如有需要，请联系我们！

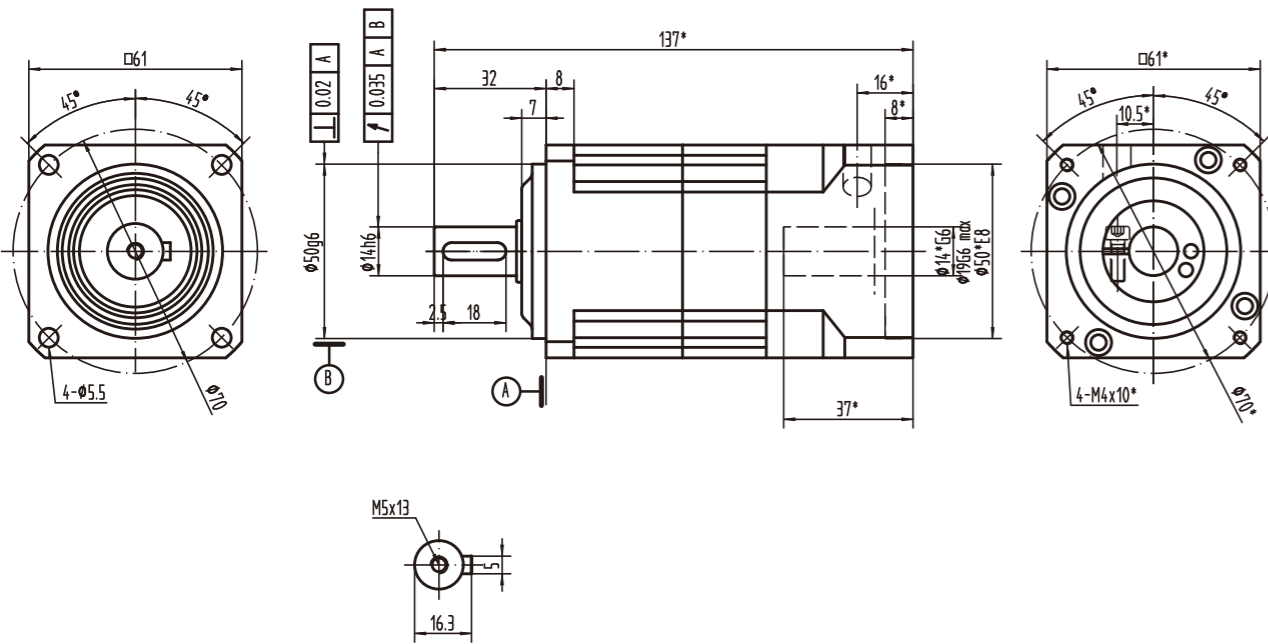
MPVB-060B-L1



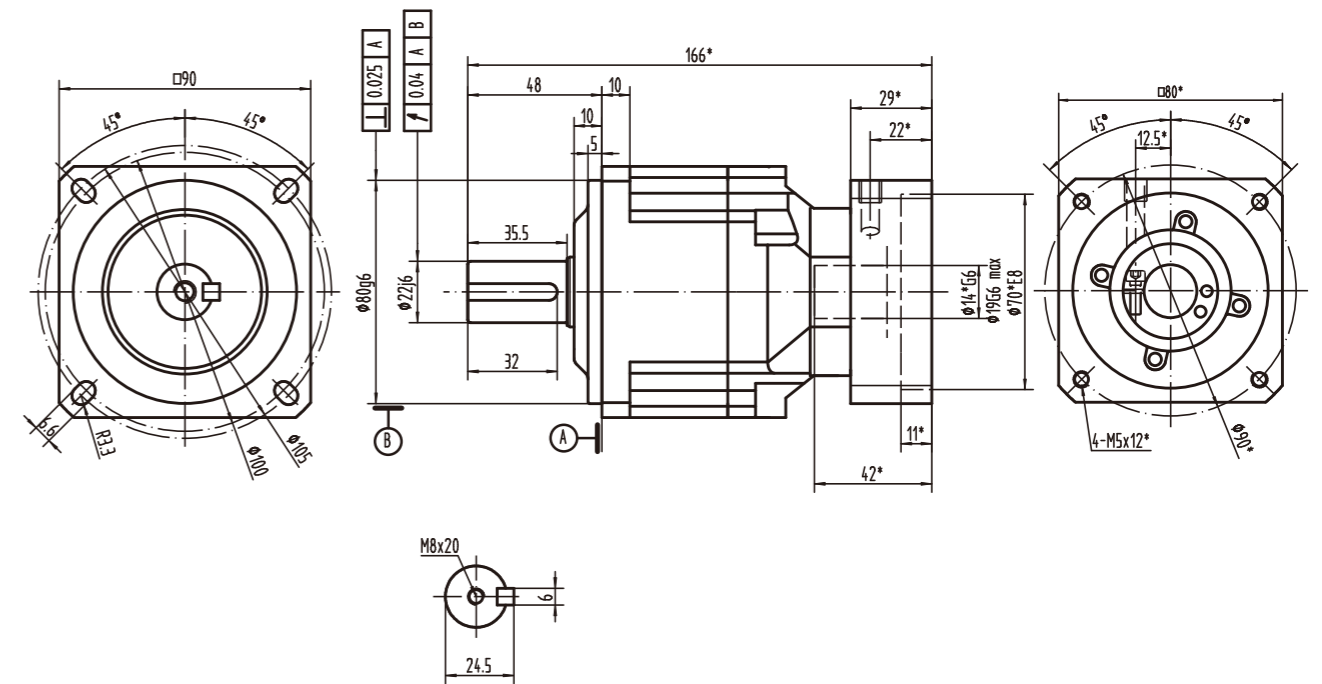
MPVB-090A-L1



MPVB-060B-L2



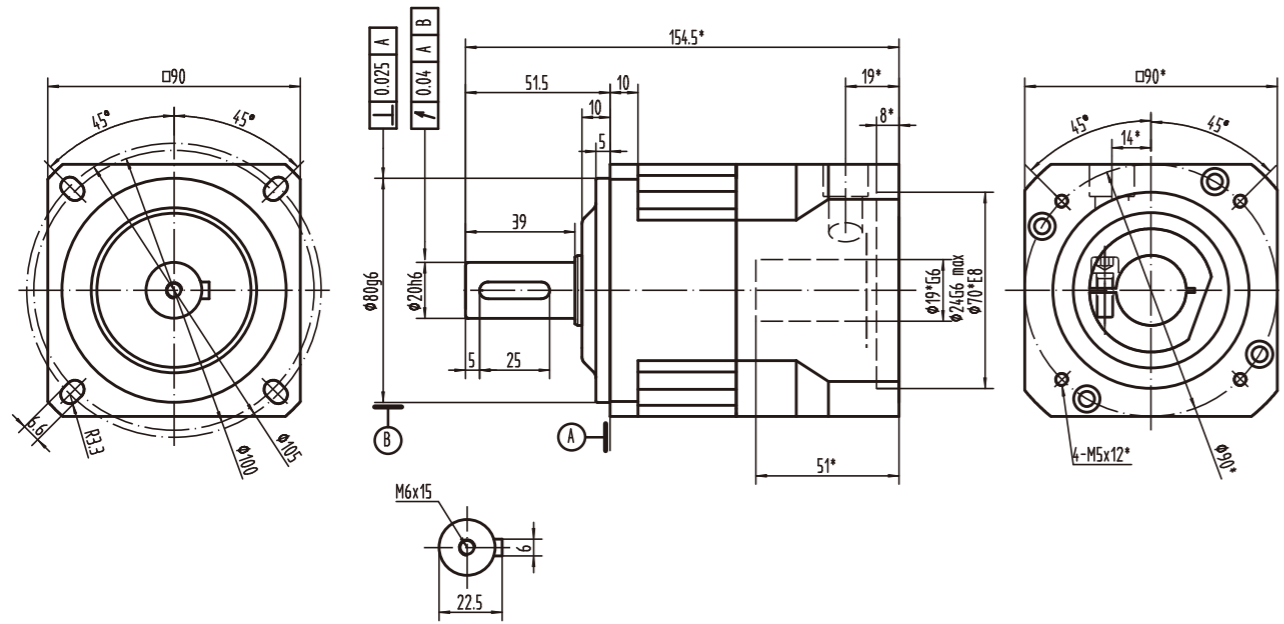
MPVB-090A-L2



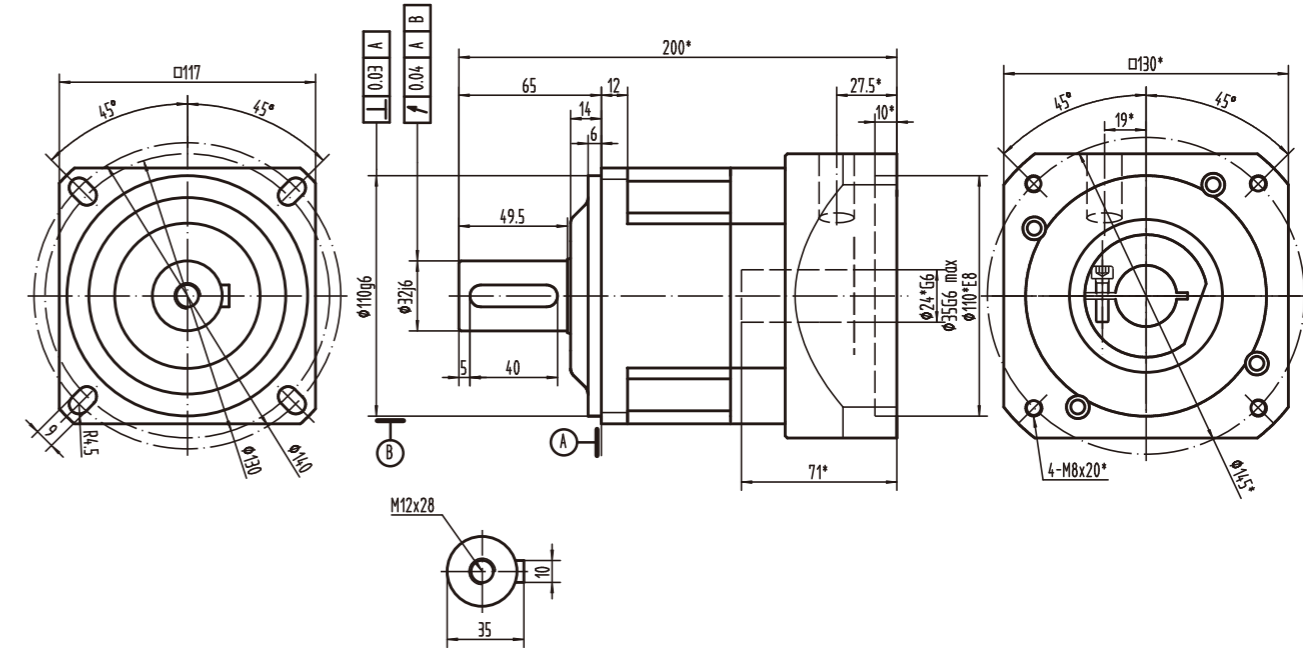
*Dimensions based on servo-motor, please contact us for custom made order.
注有 * 尺寸：代表可根据客户需求定制产品，如有需要，请联系我们！

*Dimensions based on servo-motor, please contact us for custom made order.
注有 * 尺寸：代表可根据客户需求定制产品，如有需要，请联系我们！

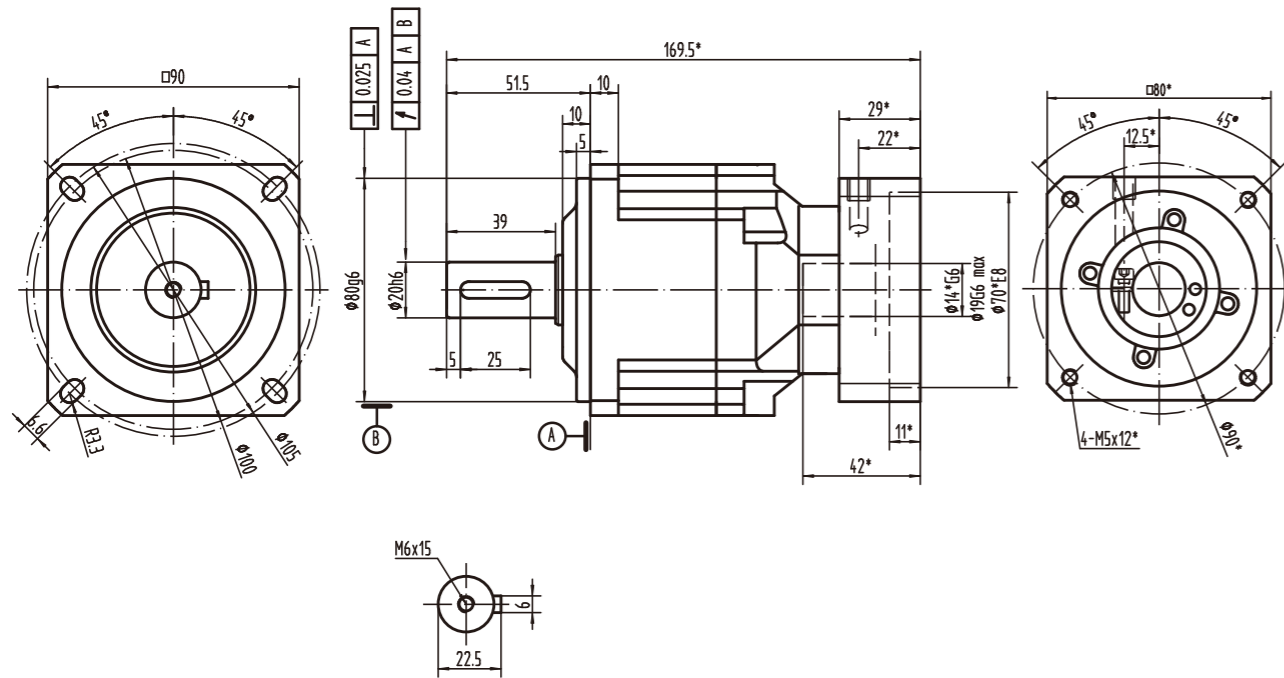
MPVB-090B-L1



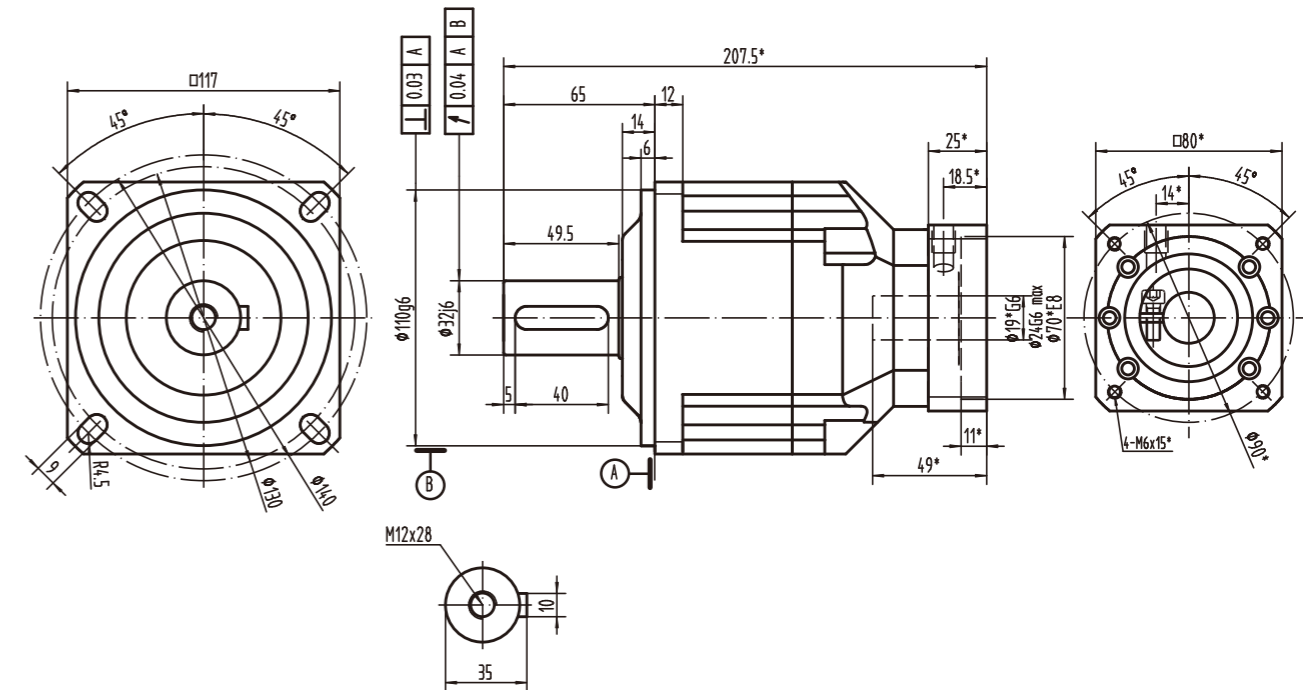
MPVB-115A-L1



MPVB-090B-L2



MPVB-115A-L2

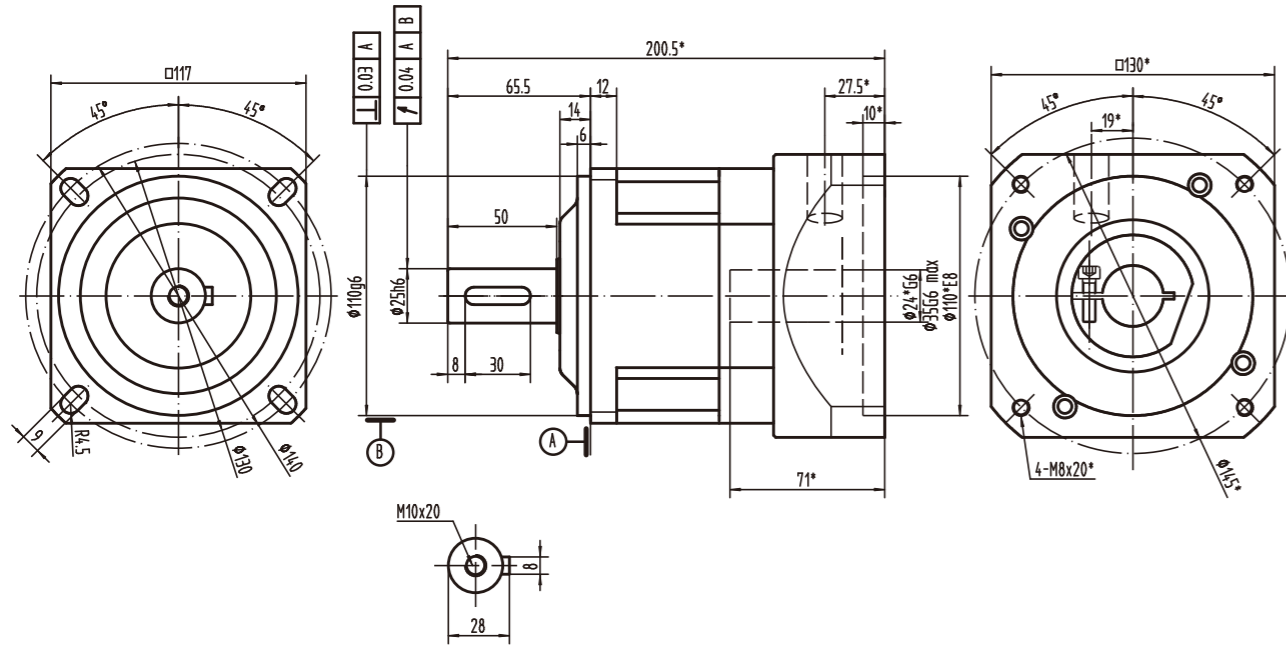


*Dimensions based on servo-motor, please contact us for custom made order.
注有 * 尺寸：代表可根据客户需求定制产品，如有需要，请联系我们！

*Dimensions based on servo-motor, please contact us for custom made order.
注有 * 尺寸：代表可根据客户需求定制产品，如有需要，请联系我们！

Drawing / Size

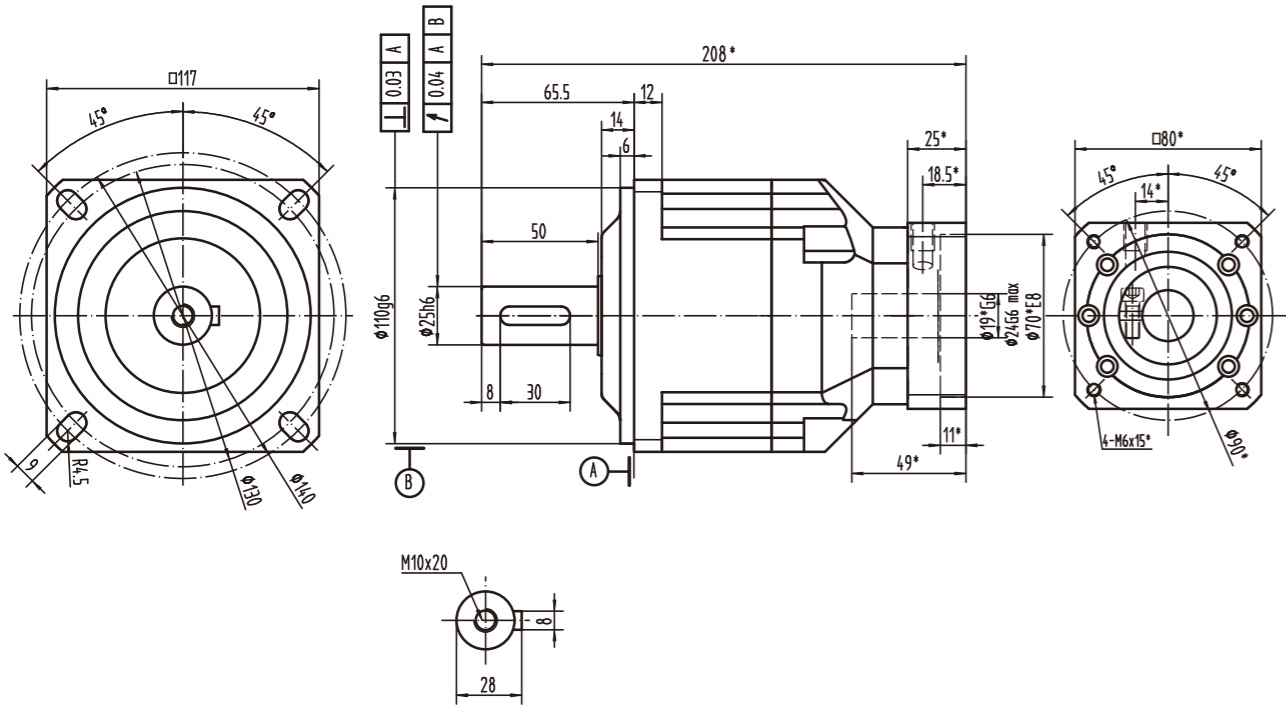
MPVB-115B-L1



Performance table

MPVB-040																																
Symb.	i	T _{2N}	T _{2Not}	n _{1N}	n _{1Max}	j _t	C _{2t}	F _{2RMax}	F _{2AMax}	J ₁	η	L _h	T	Lub	PC	MP	dB															
Unit		N _m	N _m	rpm	rpm	arcmin	Nm/arcmin	N	N	kgcm ²	%	h	°C																			
I STAGE	3	14	2×T _{2N}	4000	8000	≤3	3	700	610	0.03	≥95	>20000	-15~45	Life Lubrication 终身润滑	IP65	Any 任何方向	≤63															
	4	14					3																									
	5	20					3																									
	6	20					3																									
	7	20					2.2																									
	8	20					3																									
	9	14					3																									
	10	14					2.2																									
	II STAGE	15					14											2×T _{2N}	4000	8000	≤5	3	700	610	0.03	≥90	>20000	-15~45	Life Lubrication 终身润滑	IP65	Any 任何方向	≤63
		20					14															3										
35		20	3																													
40		20	3																													
50		20	3																													
80		20	3																													
100		14	2.2																													

MPVB-115B-L2



MPVB-060																																
Symb.	i	T _{2N}	T _{2Not}	n _{1N}	n _{1Max}	j _t	C _{2t}	F _{2RMax}	F _{2AMax}	J ₁	η	L _h	T	Lub	PC	MP	dB															
Unit		N _m	N _m	rpm	rpm	arcmin	Nm/arcmin	N	N	kgcm ²	%	h	°C																			
I STAGE	3	25	2×T _{2N}	3000	6000	≤3	7	1200	1050	0.16	≥95	>20000	-15~45	Life Lubrication 终身润滑	IP65	Any 任何方向	≤67															
	4	40					7																									
	5	40					7																									
	6	40					7																									
	7	40					7																									
	8	40					7																									
	9	25					7																									
	10	25					7																									
	II STAGE	15					35											2×T _{2N}	3000	6000	≤5	7	1200	1050	0.13	≥90	>20000	-15~45	Life Lubrication 终身润滑	IP65	Any 任何方向	≤67
		20					50															7										
35		50	7																													
40		50	7																													
50		50	7																													
80		50	7																													
100		35	7																													

*Dimensions based on servo-motor, please contact us for custom made order.
注有 * 尺寸：代表可根据客户需求定制产品，如有需要，请联系我们！

Performance table

NOTES

MPVB-090																	
Symb.	i	T _{2N}	T _{2Not}	n _{1N}	n _{1Max}	j _t	C _{2t}	F _{2RMax}	F _{2AMax}	J ₁	η	L _h	T	Lub	PC	MP	dB
Unit		N _m	N _m	rpm	rpm	arcmin	Nm/arcmin	N	N	kgcm ²	%	h	°C				
I STAGE	3	80	2×T _{2N}	3000	6000	≤3	14	2450	2200	0.61	≥95	>20000	-15~45	Life Lubrication 终身润滑	IP65	Any 任何方向	≤68
	4	120								0.48							
	5	125								0.47							
	6	125								0.47							
	7	125								0.45							
	8	125								0.45							
	9	80								0.42							
	10	80								0.4							
II STAGE	15	80	2×T _{2N}	3000	6000	≤5	14	2450	2200	0.13	≥90	>20000	-15~45	Life Lubrication 终身润滑	IP65	Any 任何方向	≤68
	20	125								0.13							
	35	125								0.13							
	40	125								0.13							
	50	125								0.13							
	80	125								0.13							
	100	80								0.13							

MPVB-115																	
Symb.	i	T _{2N}	T _{2Not}	n _{1N}	n _{1Max}	j _t	C _{2t}	F _{2RMax}	F _{2AMax}	J ₁	η	L _h	T	Lub	PC	MP	dB
Unit		N _m	N _m	rpm	rpm	arcmin	Nm/arcmin	N	N	kgcm ²	%	h	°C				
I STAGE	3	160	2×T _{2N}	3000	6000	≤3	25	4400	4000	3.25	≥95	>20000	-15~45	Life Lubrication 终身润滑	IP65	Any 任何方向	≤70
	4	220								2.74							
	5	260								2.71							
	6	260								2.71							
	7	260								2.62							
	8	260								2.6							
	9	160								2.59							
	10	160								2.57							
II STAGE	15	220	2×T _{2N}	3000	6000	≤5	25	4400	4000	0.45	≥90	>20000	-15~45	Life Lubrication 终身润滑	IP65	Any 任何方向	≤70
	20	300								0.45							
	35	350								0.45							
	40	360								0.45							
	50	350								0.4							
	80	360								0.4							
	100	220								0.4							