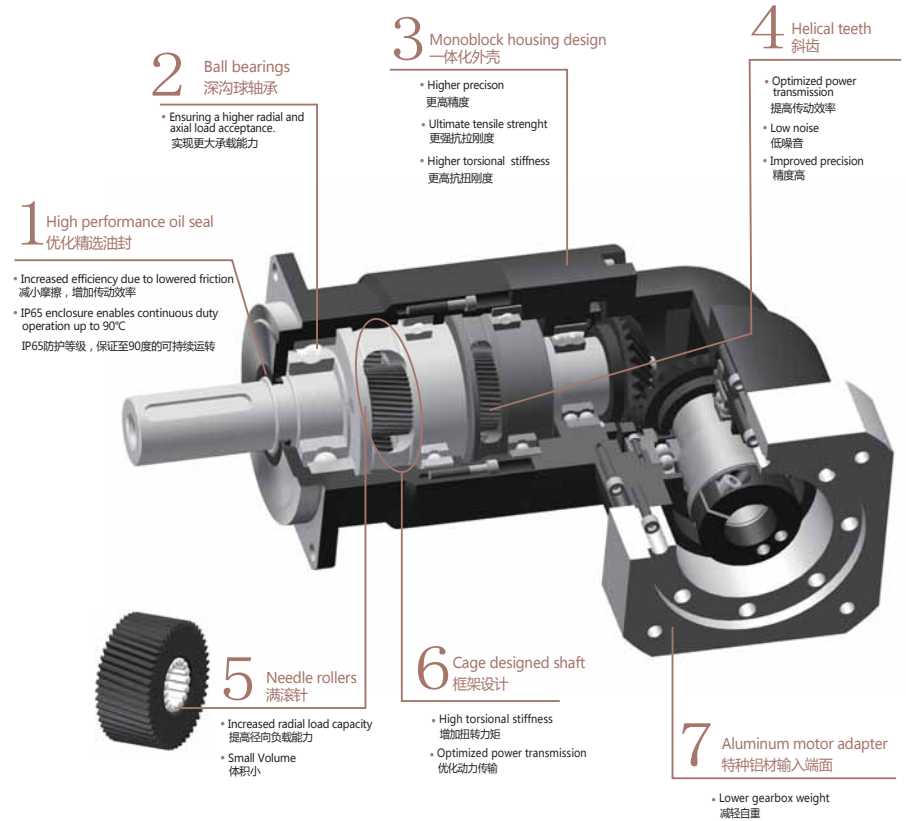




此款应用高端直角解决方案，保持原有MVB系列的设计与性能。

A high-performance right-angle solution for servo applications that keeps MVB's design and characteristics.



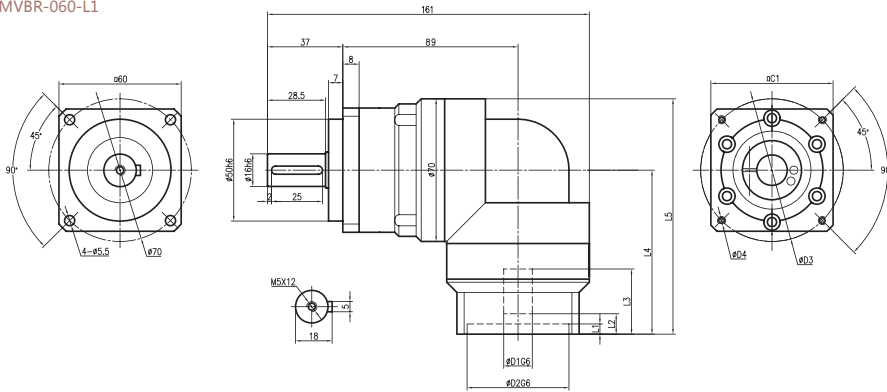
造型数据:

Selection data:

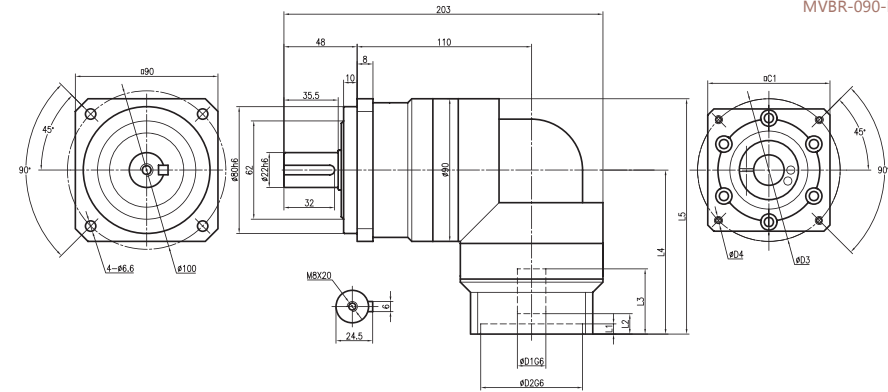
扭矩 (Nm)	22-600
速比	3-100
背隙 (arcmin)	≤8
最大工作温度 (°C)	90
噪音 (dB)	66-74

Nominal output torque (Nm)	22-600
Reduction ratio	3-100
Backlash (arcmin)	≤8
Max.working temperature (°C)	90
Noise (dB)	66-74

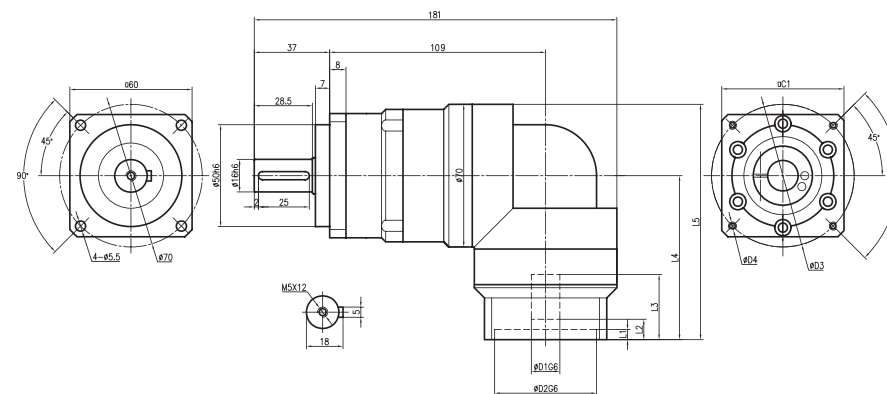
MVBR-060-L1



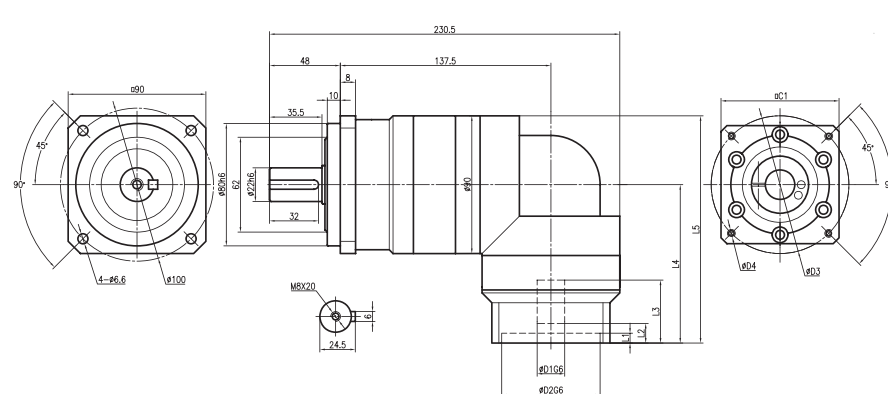
MVBR-090-L1



MVBR-060-L2



MVBR-090-L2



Flange	D1*	D2*	D3*	D4*	L1*	L2*	L3*	L4*	L5*	C1*
Type I	Φ11	Φ50	Φ70	4-M4X8	5	10.5	32	86	121	60
Type II	Φ14	Φ50	Φ70	4-M4X8	5	10.5	32	86	121	60

Flange	D1*	D2*	D3*	D4*	L1*	L2*	L3*	L4*	L5*	C1*
Type I	Φ19	Φ70	Φ90	4-M8X16	12	13	42	107	152	80
Type II	Φ22	Φ110	Φ145	4-M8X16	12	13	47	112	157	130
Type III	Φ24	Φ110	Φ145	4-M8X16	12	13	47	112	157	130

*Dimensions based on servo-motor, please contact us for custom made order.
注有 * 尺寸：代表可根据客户需求定制产品，如有需要，请联系我们！

*Dimensions based on servo-motor, please contact us for custom made order.
注有 * 尺寸：代表可根据客户需求定制产品，如有需要，请联系我们！

MVBR-060																		
Symb.	i	T _{2N}	T _{2Not}	n _{1N}	n _{1Max}	j _t	C _{2t}	F _{2RMMax}	F _{2AMMax}	J ₁	η	L _h	T	Lub	PC	MP	dB	
Unit		N _m	N _m	rpm	rpm	arcmin	Nm/arcmin	N	N	kgcm ²	%	h	°C					
I STAGE	3	22								0.16				Life Lubrication 终身润滑	IP65	Any 任何方向	≤66	
	4	30								0.14								
	5	45								0.13								
	6	45								0.13								
	7	45								0.13								
	8	45								0.13								
	9	30								0.13								
	10	30	2×T _{2N}	3000	6000	≤8	7	1200	1050	0.13	≥90	>20000	-15~45					
	15	30					7			0.13								
	20	30					7			0.13								
II STAGE	35	45								0.13								
	40	45								0.13								
	50	45								0.13								
	80	45								0.13								
	100	30								0.13								

MVBR-120																		
Symb.	i	T _{2N}	T _{2Not}	n _{1N}	n _{1Max}	j _t	C _{2t}	F _{2RMMax}	F _{2AMMax}	J ₁	η	L _h	T	Lub	PC	MP	dB	
Unit		N _m	N _m	rpm	rpm	arcmin	Nm/arcmin	N	N	kgcm ²	%	h	°C					
I STAGE	3	150								3.25				Life Lubrication 终身润滑	IP65	Any 任何方向	≤72	
	4	200								2.74								
	5	260								2.71								
	6	300								2.71								
	7	300								2.62								
	8	300								2.60								
	9	200								2.59								
	10	200	2×T _{2N}	3000	6000	≤8	25	4200	3800	2.57	≥90	>20000	-15~45					
	15	200					25			0.45								
	20	300					25			0.45								
II STAGE	35	300								0.45								
	40	300								0.45								
	50	300								0.40								
	80	300								0.40								
	100	200								0.40								

MVBR-090																		
Symb.	i	T _{2N}	T _{2Not}	n _{1N}	n _{1Max}	j _t	C _{2t}	F _{2RMMax}	F _{2AMMax}	J ₁	η	L _h	T	Lub	PC	MP	dB	
Unit		N _m	N _m	rpm	rpm	arcmin	Nm/arcmin	N	N	kgcm ²	%	h	°C					
I STAGE	3	65								0.61				Life Lubrication 终身润滑	IP65	Any 任何方向	≤68	
	4	85								0.48								
	5	90								0.47								
	6	90								0.47								
	7	90								0.45								
	8	90								0.45								
	9	65								0.42								
	10	65	2×T _{2N}	3000	6000	≤8	14	2400	2200	0.40	≥90	>20000	-15~45					
	15	65					14			0.45								
	20	85					14			0.45								
II STAGE	35	90								0.45								
	40	90								0.45								
	50	90								0.40								
	80	90								0.40								
	100	65								0.40								

MVBR-140																		
Symb.	i	T _{2N}	T _{2Not}	n _{1N}	n _{1Max}	j _t	C _{2t}	F _{2RMMax}	F _{2AMMax}	J ₁	η	L _h	T	Lub	PC	MP	dB	
Unit		N _m	N _m	rpm	rpm	arcmin	Nm/arcmin	N	N	kgcm ²	%	h	°C					
I STAGE	3	270								9.21				Life Lubrication 终身润滑	IP65	Any 任何方向	≤74	
	4	350								7.54								
	5	420								7.42								
	6	520								7.42								
	7	600								7.14								
	8	600								7.14								
	9	400								7.08								
	10	400	2×T _{2N}	2000	4000	≤8	50	8500	7800	7.03	≥90	>20000	-15~45					
	15	400					50			2.63								
	20	600					50			2.63								
II STAGE	35	600								2.43								
	40	600								2.43								
	50	600								2.39								
	80	600								2.39								
	100	400								2.39								

MVBR

MVBR

Efficiency

The efficiency of planetary reducers varies with several parameters such as ratio, input speed, temperature, lubrication conditions, etc.

The efficiency was measured under the following working conditions:

Input speed (rpm)	3000
Operating temperature (°C)	25
Lubricant	Standard

效率特性

减速机的效率一般因减速比、输入转速、负载转速、温度、润滑条件而异。在下列测定条件下，各系列的效率如下所示。此外，图表的数值均为平均值。

输入转速 (rpm)	3000
环境温度 (°C)	25
润滑剂	标准润滑剂

